

MONA OFFSHORE WIND PROJECT

Tree Survey Clarification Note: Appendix 17.4 Updated Tree Survey Plan Part 2

Deadline: 3

Application Reference: EN010137

Document Reference: S_D3_17.4

Document Number: MOCNS-J3303-RPS-10331

30 September 2024

F01



Image of an offshore wind farm

Document status

Version	Purpose of document	Authored by	Reviewed by	Approved by	Review date
F01	Submission at Deadline 3	RPS	Mona Offshore Wind Ltd.	Mona Offshore Wind Ltd.	30 September 2024

Prepared by:
RPS

Prepared for:
Mona Offshore Wind Ltd.

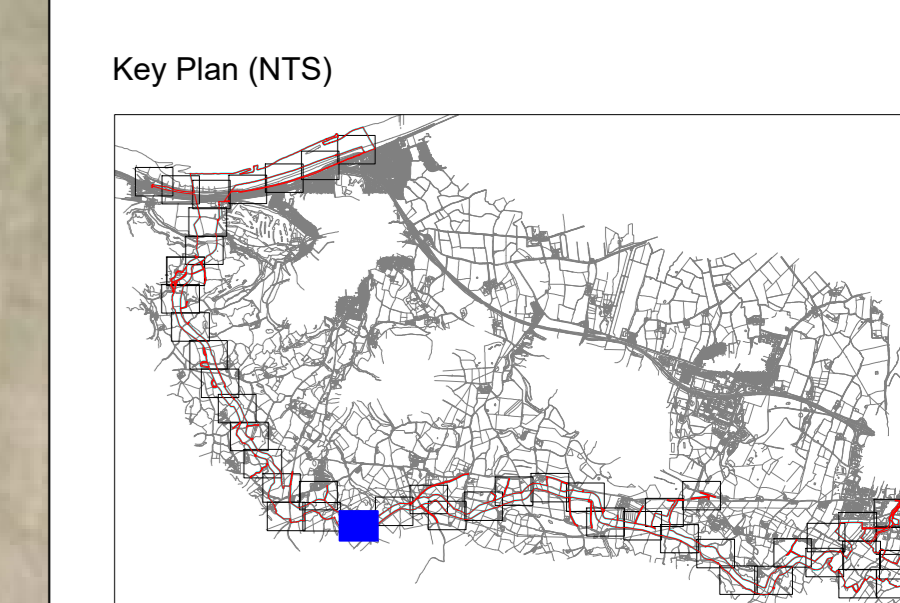


LEGEND

- Mona Offshore Development Area (MO_PRJ_BP_0162_DCO_Rev11)
- Tree with numbered reference. Canopy spread and coloured BS5837:2012 tree quality category as shown below. # = Tree details estimate (inaccessible tree) = Tree in off site location
- Vegetation group with numbered reference. Canopy extents and coloured BS5837:2012 tree quality category as shown below.
- Hedge with numbered reference. Canopy extents and coloured BS5837:2012 tree quality category as shown below.
- Woodland with numbered reference. Canopy extents and coloured BS5837:2012 tree quality category as shown below.
- Tree Quality Categories - Table 1 BS 5837:2012
 - Category A - High quality
 - Category B - Moderate quality
 - Category C - Low quality
 - Category U - Unsuitable for retention
- Direction of first significant branch
- Root protection area (RPA) Calculated in accordance with Section 4.6 - BS5837:2012
- Tree protected by Conwy Council or Denbighshire Tree Preservation Order (TPO). Bracketted number reference relates to the TPO Schedule.
- Veteran tree buffer (15 x stem Ø) (as per standing advice produced by Natural Resource Wales)
- Designated Ancient Woodland and buffer (15m offset, as per Natural Resource Wales ancient woodland inventory, via open data publication)

NOTES:

- Refer to RPS Tree Survey & Arboricultural Impact Assessment Report for further details.
- Survey based on a visual inspection from the ground and is not intended as a full arboricultural inspection.
- Plans produced in accordance with recommendations set out in BS 5837:2012 - 'Trees in Relation to design, demolition and construction'.
- Due to the legal protection afforded to breeding birds vegetation removal should not take place during the bird nesting period, generally, although not restricted to, March - August inclusive.
- Survey based upon aerial photography, therefore tree locations should be deemed as approximate, and not digitally accurate.



Drawing Number:
722

Project Name:
MONA OFFSHORE WIND PROJECT

Drawing Title:
TREE SURVEY PLAN

Scale
Scale@A0: 1:500

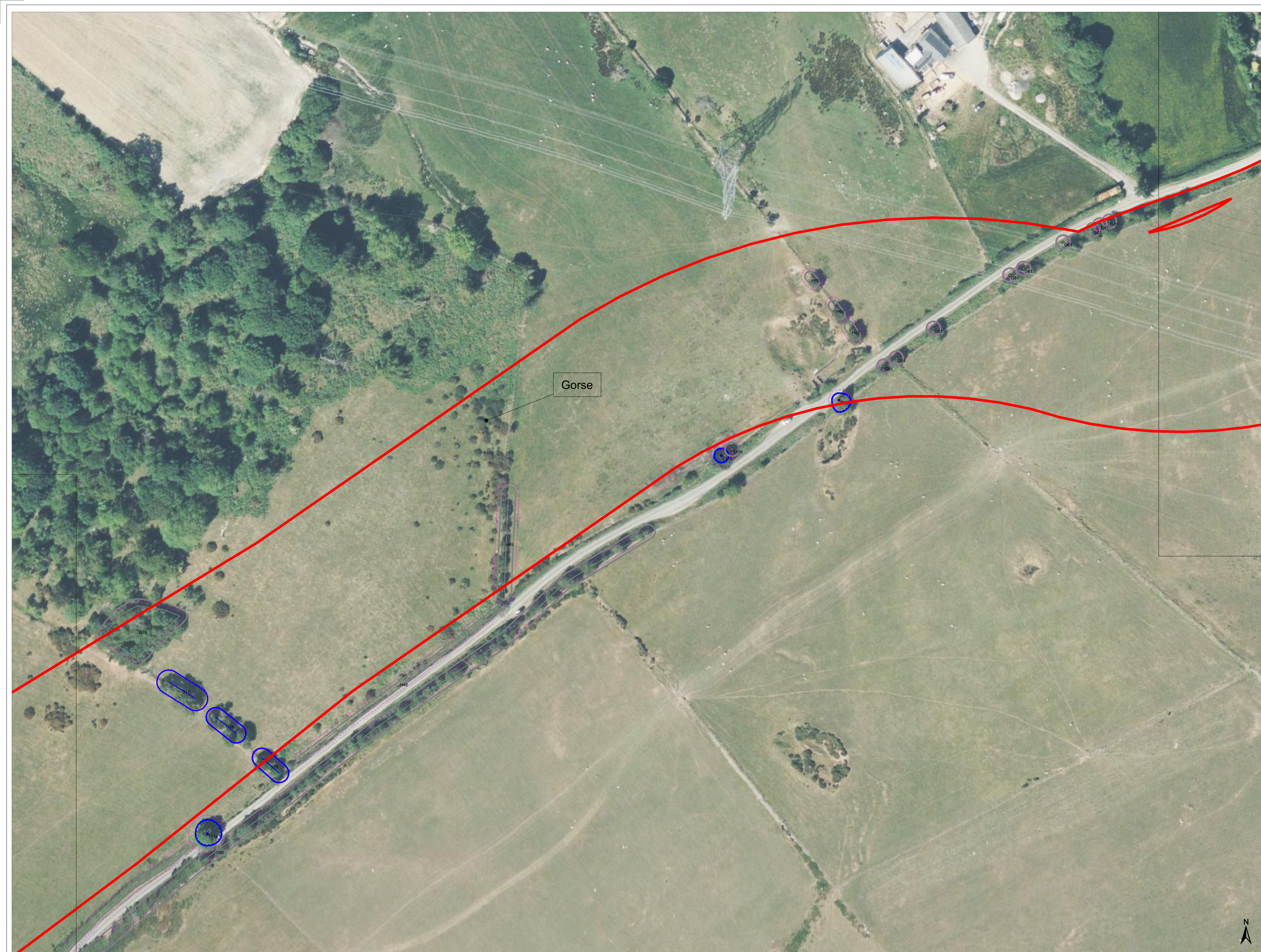
Geodetic Information:
Datum: ETRS 1989
Projection: British National Grid

Data Sources: Client

Service Layer Credits: Esri, HERE, Garmin, Intermap, increment P Corp., GEBCO, USGS, FAO, NPS, NRCAN, GeoBase, IGN, Kadaster NL, Ordnance Survey, Esri Japan, METI, Esri China (Hong Kong), (c) OpenStreetMap contributors, and the GIS User Community

VER	DATE	DETAILS	BY	CHECK
03	Sept/24	Comment	RC	DC

\\s01-rs-01\projects\3900\Series\JL3999 - Morgan and Mona Offshore\Technical\ACAD\Current\JL3999_7017430_TCP_Cable_Route.dwg
\\s01-rs-01\projects\3900\Series\JL3999 - Morgan and Mona Offshore\Technical\ACAD\Current\JL3999_7017430_TCP_Cable_Route.dwg

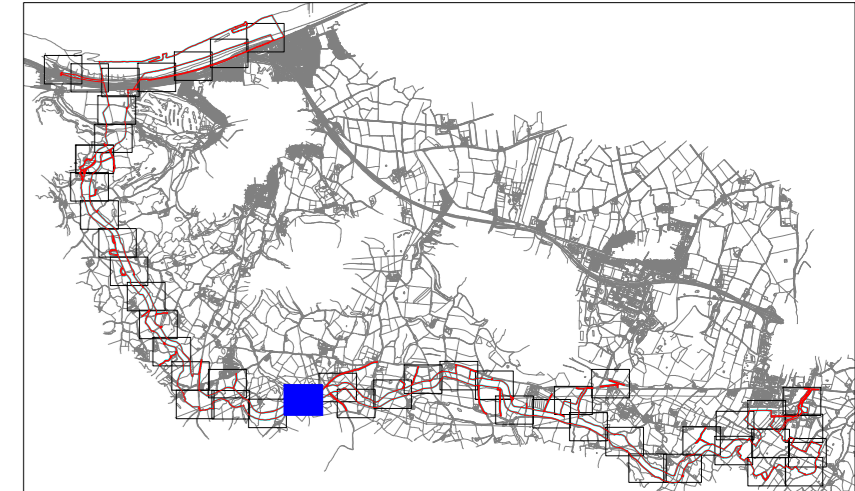


LEGEND

- Mona Offshore Development Area (MO_PRJ_BP_0162_DCO_Rev11)
- Tree with numbered reference. Canopy spread and coloured BS5837:2012 tree quality category as shown below. # = Tree details estimate (inaccessible tree) = Tree in off site location
- Vegetation group with numbered reference. Canopy extents and coloured BS5837:2012 tree quality category as shown below.
- Hedge with numbered reference. Canopy extents and coloured BS5837:2012 tree quality category as shown below.
- Woodland with numbered reference. Canopy extents and coloured BS5837:2012 tree quality category as shown below.
- Tree Quality Categories - Table 1 BS 5837:2012
 - Category A - High quality
 - Category B - Moderate quality
 - Category C - Low quality
 - Category U - Unsuitable for retention
- Direction of first significant branch
- Root protection area (RPA) Calculated in accordance with Section 4.6 - BS5837:2012
- Tree protected by Conwy Council or Denbighshire Tree Preservation Order (TPO). Bracketted number reference relates to the TPO Schedule.
- Veteran tree buffer (15 x stem Ø) (as per standing advice produced by Natural Resource Wales)
- Designated Ancient Woodland and buffer (15m offset, as per Natural Resource Wales ancient woodland inventory, via open data publication)

- NOTES:**
- Refer to RPS Tree Survey & Arboricultural Impact Assessment Report for further details.
 - Survey based on a visual inspection from the ground and is not intended as a full arboricultural inspection.
 - Plan produced in accordance with recommendations set out in BS 5837:2012 - 'Trees in Relation to design, demolition and construction'.
 - Due to the legal protection afforded to breeding birds vegetation removal should not take place during the bird nesting period; generally, although not restricted to, March - August inclusive.
 - Survey based upon aerial photography, therefore tree locations should be deemed as approximate, and not digitally accurate.

Key Plan (NTS)



Drawing Number:

723



Project Name:
MONA OFFSHORE WIND PROJECT

Drawing Title:
TREE SURVEY PLAN

Scale
Scale@A0: 1:500

Geodetic Information:
Datum: ETRS 1989
Projection: British National Grid

Data Sources: Client

Service Layer Credits: Esri, HERE, Garmin, Intermap, increment P Corp., GEBCO, USGS, FAO, NPS, NRCAN, GeoBase, IGN, Kadaster NL, Ordnance Survey, Esri Japan, METI, Esri China (Hong Kong), (c) OpenStreetMap contributors, and the GIS User Community

VER	DATE	DETAILS	BY	CHECK
03	Sept/24	Comment	RC	DC

\\nas01-01\projects\3900\Series\JL3999_Morgan and Mona Offshore\Technical\ACAD\Current\JL3999_701-7430_TCP_Cable_Route.dwg
\\nas01-01\projects\3900\Series\JL3999_Morgan and Mona Offshore\Technical\ACAD\Current\JL3999_701-7430_TCP_Cable_Route.dwg

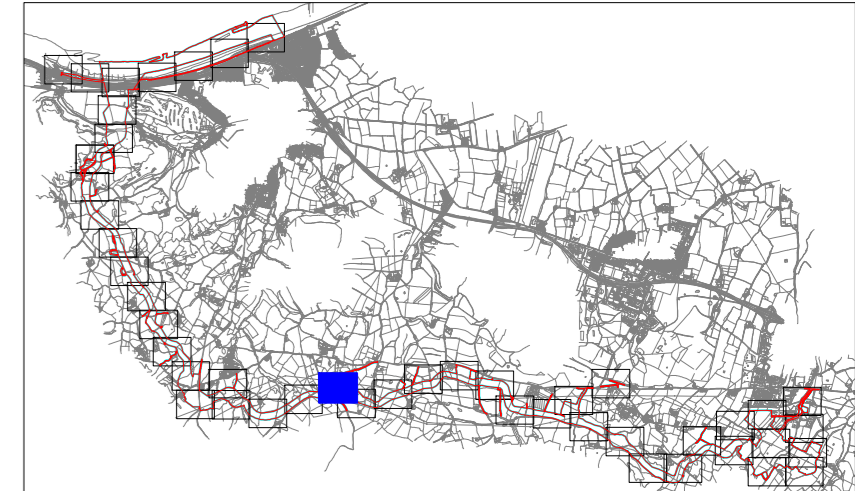


LEGEND

- Mona Offshore Development Area (MO_PRJ_BP_0162_DCO_Rev11)
- Tree with numbered reference. Canopy spread and coloured BS5837:2012 tree quality category as shown below. # = Tree details estimate (inaccessible tree) * = Tree in off site location
- Vegetation group with numbered reference. Canopy extents and coloured BS5837:2012 tree quality category as shown below.
- Hedge with numbered reference. Canopy extents and coloured BS5837:2012 tree quality category as shown below.
- Woodland with numbered reference. Canopy extents and coloured BS5837:2012 tree quality category as shown below.
- BS 5837:2012 Tree Quality Categories - Table 1
 - Category A - High quality
 - Category B - Moderate quality
 - Category C - Low quality
 - Category U - Unsuitable for retention
- Direction of first significant branch
- Root protection area (RPA) Calculated in accordance with Section 4.6 - BS5837:2012
- Tree protected by Conwy Council or Denbighshire Tree Preservation Order (TPO). Bracketted number reference relates to the TPO Schedule.
- Veteran tree buffer (15 x stem Ø) (as per standing advice produced by Natural Resource Wales)
- Designated Ancient Woodland and buffer (15m offset, as per Natural Resource Wales ancient woodland inventory, via open data publication)

- NOTES:**
- Refer to RPS Tree Survey & Arboricultural Impact Assessment Report for further details.
 - Survey based on a visual inspection from the ground and is not intended as a full arboricultural inspection.
 - Plans produced in accordance with recommendations set out in BS 5837:2012 - 'Trees in Relation to design, demolition and construction'.
 - Due to the legal protection afforded to breeding birds vegetation removal should not take place during the bird nesting period, generally, although not restricted to, March - August inclusive.
 - Survey based upon aerial photography, therefore tree locations should be deemed as approximate, and not digitally accurate.

Key Plan (NTS)



Drawing Number:

724

© 2023 Microsoft Corporation © 2023 Maxar ©CNES (2023) Distribution Airbus DS

Project Name:
MONA OFFSHORE WIND PROJECT

Drawing Title:
TREE SURVEY PLAN

Scale
Scale@A0: 1:500

Geodetic Information:
Datum: ETRS 1989
Projection: British National Grid

Data Sources: Client

Service Layer Credits: Esri, HERE, Garmin, Intermap, increment P Corp., GEBCO, USGS, FAO, NPS, NRCAN, GeoBase, IGN, Kadaster NL, Ordnance Survey, Esri Japan, METI, Esri China (Hong Kong), (c) OpenStreetMap contributors, and the GIS User Community

VER	DATE	DETAILS	BY	CHECK
03	Sept/24	Comment	RC	DC

\\s01-rs-01\projects\3900\Serial\JL3999 - Morgan and Mona Offshore\Drawings\Tech\ACAD\Current\JL3999_7017430_TCP Cable Route.dwg
\\s01-rs-01\projects\3900\Serial\JL3999 - Morgan and Mona Offshore\Drawings\Tech\ACAD\Current\JL3999_7017430_TCP Cable Route.dwg

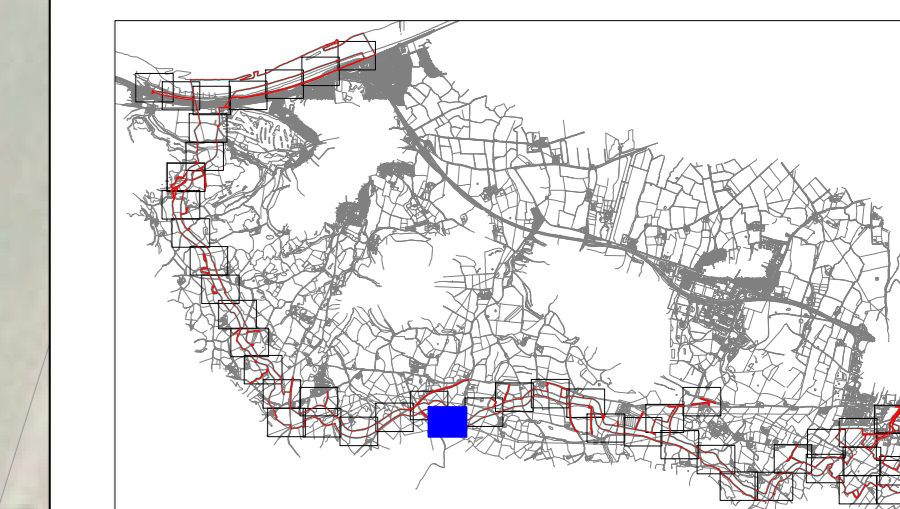


LEGEND

- Mona Offshore Development Area (MO_PRJ_BP_0162_DCO_Rev11)
- Tree with numbered reference. Canopy spread and coloured BS5837:2012 tree quality category as shown below. # = Tree details estimate (inaccessible tree) * = Tree in off site location
- Vegetation group with numbered reference. Canopy extents and coloured BS5837:2012 tree quality category as shown below.
- Hedge with numbered reference. Canopy extents and coloured BS5837:2012 tree quality category as shown below.
- Woodland with numbered reference. Canopy extents and coloured BS5837:2012 tree quality category as shown below.
- BS 5837:2012 Tree Quality Categories - Table 1
 - Category A - High quality
 - Category B - Moderate quality
 - Category C - Low quality
 - Category U - Unsuitable for retention
- Direction of first significant branch
- Root protection area (RPA) Calculated in accordance with Section 4.6 - BS5837:2012
- Tree protected by Conwy Council or Denbighshire Tree Preservation Order (TPO). Bracketted number reference relates to the TPO Schedule.
- Veteran tree buffer (15 x stem Ø) (as per standing advice produced by Natural Resource Wales)
- Designated Ancient Woodland and buffer (15m offset; as per Natural Resource Wales ancient woodland inventory, via open data publication)

- NOTES:**
- Refer to RPS Tree Survey & Arboricultural Impact Assessment Report for further details.
 - Survey based on a visual inspection from the ground and is not intended as a full arboricultural inspection.
 - Plans produced in accordance with recommendations set out in BS 5837:2012 - 'Trees in Relation to design, demolition and construction'.
 - Due to the legal protection afforded to breeding birds vegetation removal should not take place during the bird nesting period; generally, although not restricted to, March - August inclusive.
 - Survey based upon aerial photography, therefore tree locations should be deemed as approximate, and not digitally accurate.

Key Plan (NTS)



Drawing Number:
725

Project Name:
MONA OFFSHORE WIND PROJECT

Drawing Title:
TREE SURVEY PLAN

Scale
Scale@A0: 1:500

Geodetic Information:
Datum: ETRS 1989
Projection: British National Grid

Data Sources: Client

Service Layer Credits: Esri, HERE, Garmin, Intermap, increment P Corp., GEBCO, USGS, FAO, NPS, NRCAN, GeoBase, IGN, Kadaster NL, Ordnance Survey, Esri Japan, METI, Esri China (Hong Kong), (c) OpenStreetMap contributors, and the GIS User Community

VER	DATE	DETAILS	BY	CHECK
03	Sept/24	Comment	RC	DC

\\s01-rs-01\projects\3300\Series\JL3999 - Morgan and Mona Offshore\Arboriculture\Tech\ACAD\Current\JL3999_701743D TCF Cable Route.dwg
Visu@rs-01\projects\3300\Series\JL3999 - Morgan and Mona Offshore\Arboriculture\Tech\ACAD\Current\JL3999_701743D TCF Cable Route.dwg

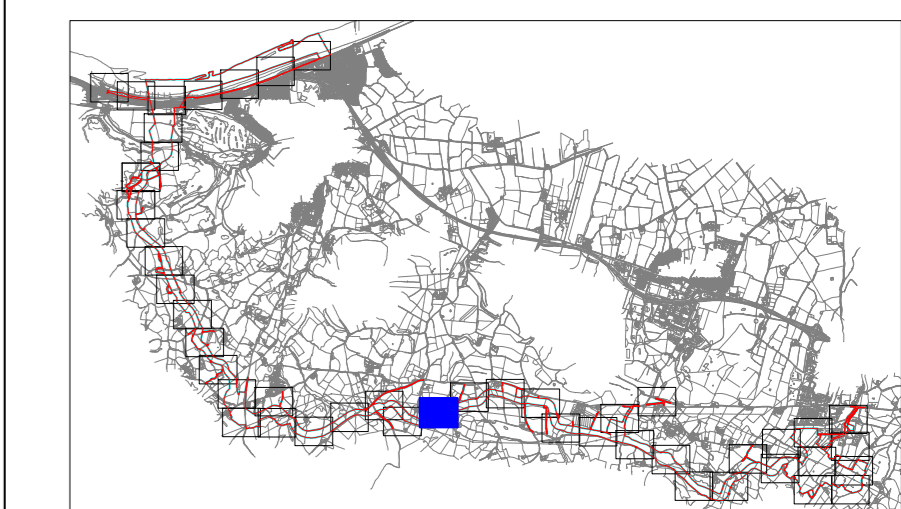


LEGEND

- Mona Offshore Development Area (MO_PRJ_BP_0162_DCO_Rev11)
- Tree with numbered reference. Canopy spread and coloured BS5837:2012 tree quality category as shown below. # = Tree details estimate (inaccessible tree) * = Tree in off site location
- Vegetation group with numbered reference. Canopy extents and coloured BS5837:2012 tree quality category as shown below.
- Hedge with numbered reference. Canopy extents and coloured BS5837:2012 tree quality category as shown below.
- Woodland with numbered reference. Canopy extents and coloured BS5837:2012 tree quality category as shown below.
- BS 5837:2012 Tree Quality Categories - Table 1
 - Category A - High quality
 - Category B - Moderate quality
 - Category C - Low quality
 - Category U - Unsuitable for retention
- Direction of first significant branch
- Root protection area (RPA) Calculated in accordance with Section 4.6 - BS5837:2012
- Tree protected by Conwy Council or Denbighshire Tree Preservation Order (TPO). Bracketted number reference relates to the TPO Schedule.
- Veteran tree buffer (15 x stem Ø) (as per standing advice produced by Natural Resource Wales)
- Designated Ancient Woodland and buffer (15m offset, as per Natural Resource Wales ancient woodland inventory, via open data publication)

- NOTES:**
- Refer to RPS Tree Survey & Arboricultural Impact Assessment Report for further details.
 - Survey based on a visual inspection from the ground and is not intended as a full arboricultural inspection.
 - Plan produced in accordance with recommendations set out in BS 5837:2012 - 'Trees in Relation to design, demolition and construction'.
 - Due to the legal protection afforded to breeding birds vegetation removal should not take place during the bird nesting period, generally, although not restricted to, March - August inclusive.
 - Survey based on aerial photography, therefore tree locations should be deemed as approximate, and not digitally accurate.

Key Plan (NTS)



Drawing Number: 726

Project Name:
MONA OFFSHORE WIND PROJECT

Drawing Title:
TREE SURVEY PLAN

Scale
Scale@A0: 1:500

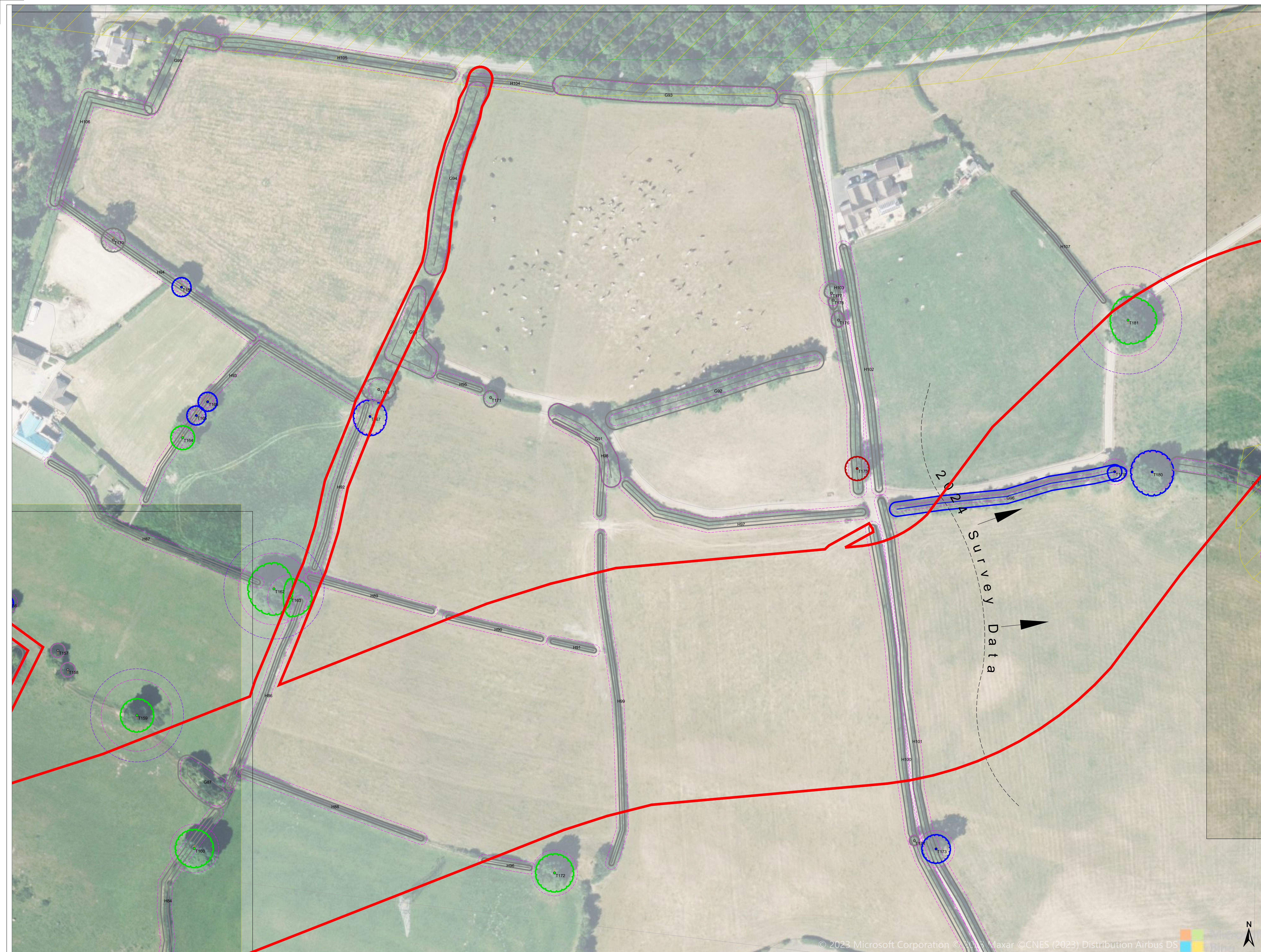
Geodetic Information:
Datum: ETRS 1989
Projection: British National Grid

Data Sources: Client

Service Layer Credits: Esri, HERE, Garmin, Intermap, increment P Corp., GEBCO, USGS, FAO, NPS, NRCAN, GeoBase, IGN, Kadaster NL, Ordnance Survey, Esri Japan, METI, Esri China (Hong Kong), (c) OpenStreetMap contributors, and the GIS User Community

VER	DATE	DETAILS	BY	CHECK
03	Sept/24	Comment	RC	DC

\\nas01-01\projects\3900\Series\JL3999 - Morgan and Mona Offshore\Arboriculture\Tech\ACAD\Current\JL3999_7017430_TCP Cable Route.dwg
Visu@-1s-01\projects\3900\Series\JL3999 - Morgan and Mona Offshore\Arboriculture\Tech\ACAD\Current\JL3999_7017430_TCP Cable Route.dwg

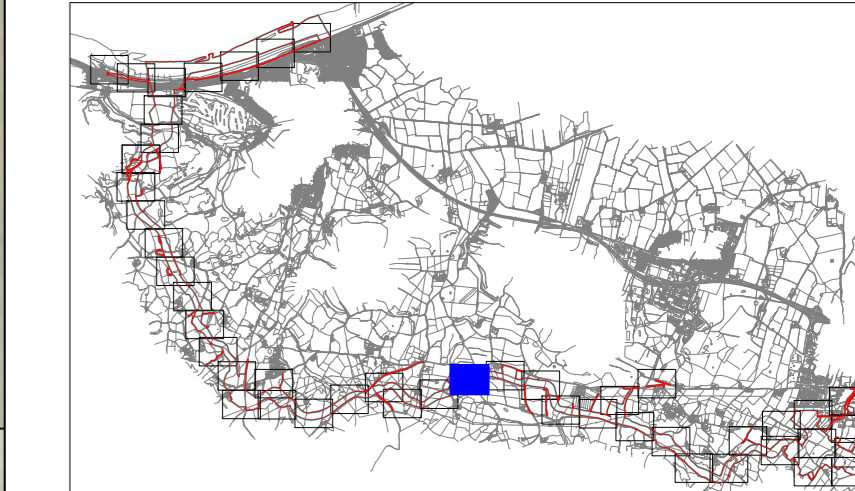


LEGEND

- MONA Offshore Development Area (MQ_PRJ_BP_0162_DCO_Rev11)
- Tree with numbered reference. Canopy spread and coloured BS5837:2012 tree quality category as shown below.
= Tree details estimate (inaccessible tree)
* = Tree in off site location
- Root protection area (RPA). Calculated in accordance with Section 4.6 - BS5837:2012
- Tree protected by Conwy Council or Denbighshire Tree Preservation Order (TPO). Bracketted number reference relates to the TPO Schedule.
- Veteran tree buffer (15 x stem Ø) (as per standing advice produced by Natural Resource Wales)
- Designated Ancient Woodland and buffer (15m offset, as per Natural Resource Wales ancient woodland inventory, via open data publication)
- Category A - High quality
- Category B - Moderate quality
- Category C - Low quality
- Category U - Unsuitable for retention
- Direction of first significant branch

- NOTES:**
- Refer to RPS Tree Survey & Arboricultural Impact Assessment Report for further details.
 - Survey based on a visual inspection from the ground and is not intended as a full arboricultural inspection.
 - Plans produced in accordance with recommendations set out in BS 5837:2012 - 'Trees in Relation to design, demolition and construction'.
 - Due to the legal protection afforded to breeding birds vegetation removal should not take place during the bird nesting period; generally, although not restricted to, March - August inclusive.
 - Survey based on aerial photography, therefore tree locations should be deemed as approximate, and not digitally accurate.

Key Plan (NTS)



Drawing Number:

727

Project Name:
MONA OFFSHORE WIND PROJECT

Drawing Title:
TREE SURVEY PLAN

Scale:
Scale@A0: 1:500

Geodetic Information:
Datum: ETRS 1989
Projection: British National Grid

Data Sources: Client

Service Layer Credits: Esri, HERE, Garmin, Intermap, increment P Corp., GEBCO, USGS, FAO, NPS, NRCAN, GeoBase, IGN, Kadaster NL, Ordnance Survey, Esri Japan, METI, Esri China (Hong Kong), (c) OpenStreetMap contributors, and the GIS User Community

VER	DATE	DETAILS	BY	CHECK
03	Sept/24	Comment	RC	DC

\\s01-rs-01\projects\3900\Series\JL3999 - Morgan and Mona Offshore\Arboriculture\Tech\ACAD\Current\JL3999_701_7430_TCP_Cable_Route.dwg
\\s01-rs-01\projects\3900\Series\JL3999 - Morgan and Mona Offshore\Arboriculture\Tech\ACAD\Current\JL3999_701_7430_TCP_Cable_Route.dwg

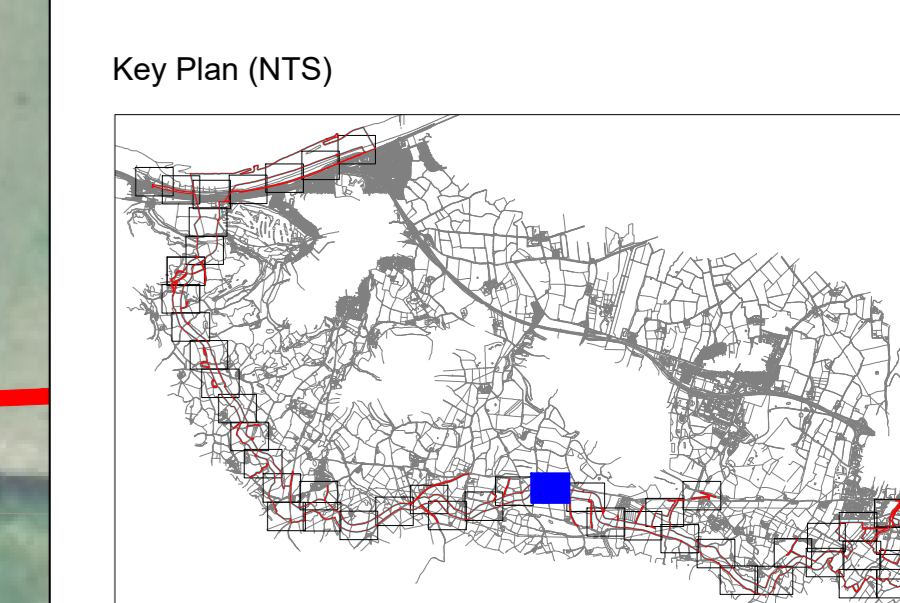


LEGEND

- Mona Offshore Development Area (MO_PRJ_BP_0162_DCO_Rev11)
- Tree with numbered reference. Canopy spread and coloured BSS5837:2012 tree quality category as shown below. # = Tree details estimate (inaccessible tree) * = Tree in off site location
- Vegetation group with numbered reference. Canopy extents and coloured BSS5837:2012 tree quality category as shown below.
- Hedge with numbered reference. Canopy extents and coloured BSS5837:2012 tree quality category as shown below.
- Woodland with numbered reference. Canopy extents and coloured BSS5837:2012 tree quality category as shown below.
- Tree Quality Categories - Table 1 BS 5837:2012
 - Category A - High quality
 - Category B - Moderate quality
 - Category C - Low quality
 - Category U - Unsuitable for retention
- Direction of first significant branch
- Root protection area (RPA) Calculated in accordance with Section 4.6 - BS5837:2012
- Tree protected by Conwy Council or Denbighshire Tree Preservation Order (TPO). Bracketted number reference relates to the TPO Schedule.
- Veteran tree buffer (15 x stem Ø) (as per standing advice produced by Natural Resource Wales)
- Designated Ancient Woodland and buffer (15m offset; as per Natural Resource Wales ancient woodland inventory, via open data publication)

NOTES:

- Refer to RPS Tree Survey & Arboricultural Impact Assessment Report for further details.
- Survey based on a visual inspection from the ground and is not intended as a full arboricultural inspection.
- Plan produced in accordance with recommendations set out in BS 5837:2012 - 'Trees in Relation to design, demolition and construction'.
- Due to the legal protection afforded to breeding birds vegetation removal should not take place during the bird nesting period; generally, although not restricted to, March - August inclusive.
- Survey based upon aerial photography, therefore tree locations should be deemed as approximate, and not digitally accurate.



Drawing Number:
728

Project Name:
MONA OFFSHORE WIND PROJECT

Drawing Title:
TREE SURVEY PLAN

Scale:
Scale@A0: 1:500

Geodetic Information:
Datum: ETRS 1989
Projection: British National Grid

Data Sources: Client

Service Layer Credits: Esri, HERE, Garmin, Intermap, increment P Corp., GEBCO, USGS, FAO, NPS, NRCAN, GeoBase, IGN, Kadaster NL, Ordnance Survey, Esri Japan, METI, Esri China (Hong Kong), (c) OpenStreetMap contributors, and the GIS User Community

VER	DATE	DETAILS	BY	CHECK
03	Sept/24	Comment	RC	DC

\\nas01\c01\projects\3900\Serial\3999 - Morgan and Mona Offshore\Arboriculture\Tech\ACAD\Current\JL3999_701\24\20_TCP_Cable_Route.dwg
Visu@-15-01\projects\3900\Serial\3999 - Morgan and Mona Offshore\Arboriculture\Tech\ACAD\Current\JL3999_701\24\20_TCP_Cable_Route.dwg

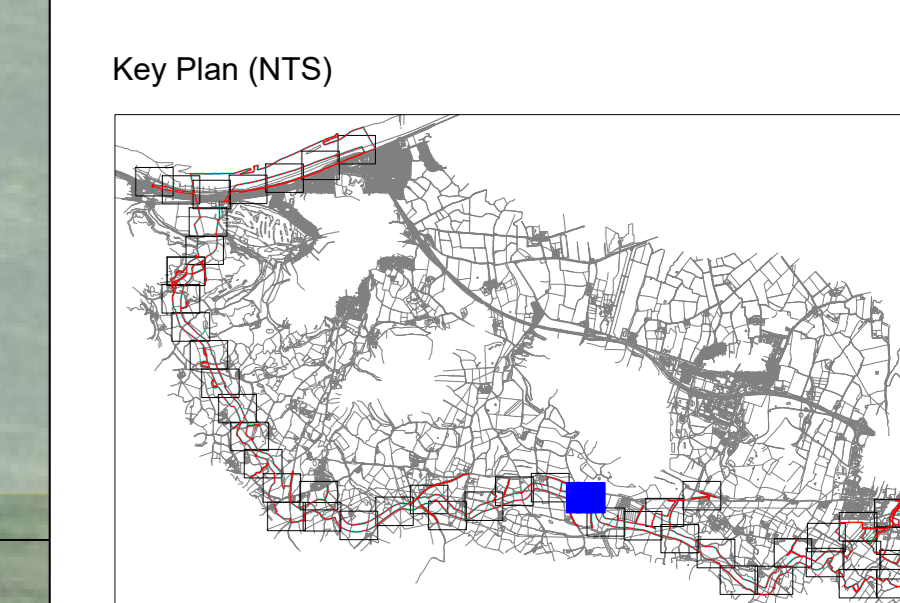


LEGEND

- Mona Offshore Development Area (MO_PRJ_BP_0162_DCO_Rev11)
- Tree with numbered reference. Canopy spread and coloured BSS5837:2012 tree quality category as shown below. # = Tree details estimate (inaccessible tree) * = Tree in off site location
- Vegetation group with numbered reference. Canopy extents and coloured BSS5837:2012 tree quality category as shown below.
- Hedge with numbered reference. Canopy extents and coloured BSS5837:2012 tree quality category as shown below.
- Woodland with numbered reference. Canopy extents and coloured BSS5837:2012 tree quality category as shown below.
- BS 5837:2012 Tree Quality Categories - Table 1
 - Category A - High quality
 - Category B - Moderate quality
 - Category C - Low quality
 - Category U - Unsuitable for retention
- Direction of first significant branch
- Root protection area (RPA) Calculated in accordance with Section 4.6 - BS5837:2012
- Tree protected by Conwy Council or Denbighshire Tree Preservation Order (TPO). Bracketted number reference relates to the TPO Schedule.
- Veteran tree buffer (15 x stem Ø) (as per standing advice produced by Natural Resource Wales)
- Designated Ancient Woodland and buffer (15m offset, as per Natural Resource Wales ancient woodland inventory, via open data publication)

NOTES:

- Refer to RPS Tree Survey & Arboricultural Impact Assessment Report for further details.
- Survey based on a visual inspection from the ground and is not intended as a full arboricultural inspection.
- Plan produced in accordance with recommendations set out in BS 5837:2012 - 'Trees in Relation to design, demolition and construction'.
- Due to the legal protection afforded to breeding birds vegetation removal should not take place during the bird nesting period; generally, although not restricted to, March - August inclusive.
- Survey based upon aerial photography, therefore tree locations should be deemed as approximate, and not digitally accurate.



Drawing Number:
729

Project Name:
MONA OFFSHORE WIND PROJECT

Drawing Title:
TREE SURVEY PLAN

Scale
Scale@A0: 1:500

Geodetic Information:
Datum: ETRS 1989
Projection: British National Grid

Data Sources: Client

Service Layer Credits: Esri, HERE, Garmin, Intermap, increment P Corp., GEBCO, USGS, FAO, NPS, NRCAN, GeoBase, IGN, Kadaster NL, Ordnance Survey, Esri Japan, METI, Esri China (Hong Kong), (c) OpenStreetMap contributors, and the GIS User Community

VER	DATE	DETAILS	BY	CHECK
03	Sept/24	Comment	RC	DC

\\msbfs01\projects\3900\Series\JL3999 - Morgan and Mona Offshore\Arboriculture\Tech\ACAD\Current\JL3999_7017430_TCP_Cable_Route.dwg
\\msbfs01\projects\3900\Series\JL3999 - Morgan and Mona Offshore\Arboriculture\Tech\ACAD\Current\JL3999_7017430_TCP_Cable_Route.dwg

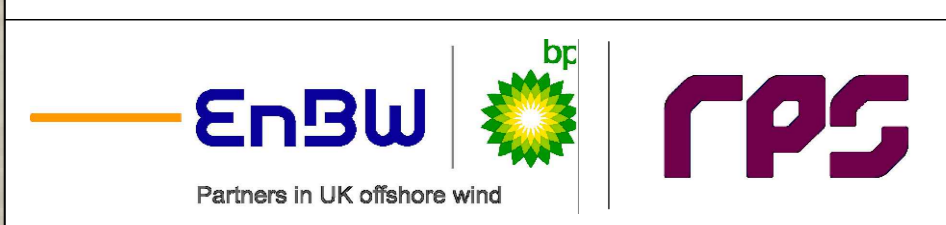
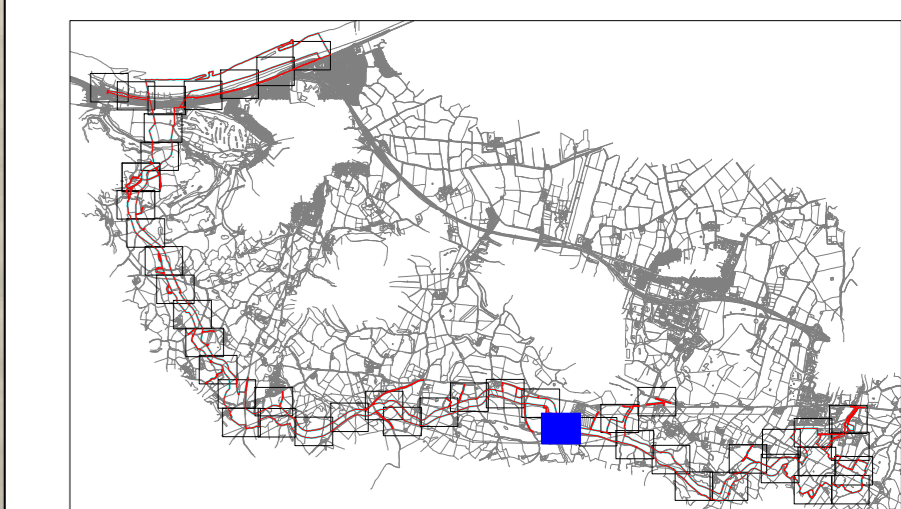


LEGEND

- Mona Offshore Development Area (MO_PRJ_BP_0162_DCO_Rev11)
- Tree with numbered reference. Canopy spread and coloured BS5837:2012 tree quality category as shown below. # = Tree details estimate (inaccessible tree) * = Tree in off site location
- Vegetation group with numbered reference. Canopy extents and coloured BS5837:2012 tree quality category as shown below.
- Hedge with numbered reference. Canopy extents and coloured BS5837:2012 tree quality category as shown below.
- Woodland with numbered reference. Canopy extents and coloured BS5837:2012 tree quality category as shown below.
- BS 5837:2012 Tree Quality Categories - Table 1
 - Category A - High quality
 - Category B - Moderate quality
 - Category C - Low quality
 - Category U - Unsuitable for retention
- Direction of first significant branch
- Root protection area (RPA) Calculated in accordance with Section 4.6 - BS5837:2012
- Tree protected by Conwy Council or Denbighshire Tree Preservation Order (TPO). Bracketted number reference relates to the TPO Schedule.
- Veteran tree buffer (15 x stem Ø) (as per standing advice produced by Natural Resource Wales)
- Designated Ancient Woodland and buffer (15m offset, as per Natural Resource Wales ancient woodland inventory, via open data publication)

- NOTES:**
- Refer to RPS Tree Survey & Arboricultural Impact Assessment Report for further details.
 - Survey based on a visual inspection from the ground and is not intended as a full arboricultural inspection.
 - Plans produced in accordance with recommendations set out in BS 5837:2012 - 'Trees in Relation to design, demolition and construction'.
 - Due to the legal protection afforded to breeding birds vegetation removal should not take place during the bird nesting period; generally, although not restricted to, March - August inclusive.
 - Survey based upon aerial photography, therefore tree locations should be deemed as approximate, and not digitally accurate.

Key Plan (NTS)



Drawing Number:
730

VER	DATE	DETAILS	BY	CHECK
03	Sept/24	Comment	RC	DC

Project Name:
MONA OFFSHORE WIND PROJECT

Drawing Title:
TREE SURVEY PLAN

Scale
Scale@A0: 1:500

Geodetic Information:
Datum: ETRS 1989
Projection: British National Grid

Data Sources: Client

Service Layer Credits: Esri, HERE, Garmin, Intermap, increment P Corp., GEBCO, USGS, FAO, NPS, NRCAN, GeoBase, IGN, Kadaster NL, Ordnance Survey, Esri Japan, METI, Esri China (Hong Kong), (c) OpenStreetMap contributors, and the GIS User Community

\\s01-rs-01\projects\3900\Series\JL3999 - Morgan and Mona Offshore\Arboriculture\Tech\ACAD\Current\JL3999_701_7430_TCP_Cable_Route.dwg
Visu@rs-01\projects\3900\Series\JL3999 - Morgan and Mona Offshore\Arboriculture\Tech\ACAD\Current\JL3999_701_7430_TCP_Cable_Route.dwg

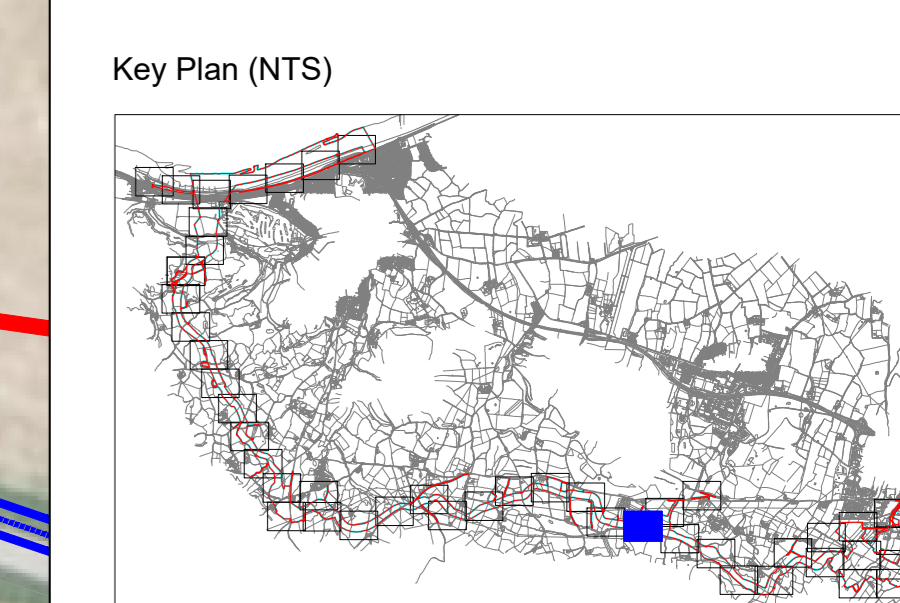


LEGEND

- Mona Offshore Development Area (MO_PRJ_BP_0162_DCO_Rev11)
- Tree with numbered reference. Canopy spread and coloured BS5837:2012 tree quality category as shown below. # = Tree details estimate (inaccessible tree) * = Tree in off site location
- Vegetation group with numbered reference. Canopy extents and coloured BS5837:2012 tree quality category as shown below.
- Hedge with numbered reference. Canopy extents and coloured BS5837:2012 tree quality category as shown below.
- Woodland with numbered reference. Canopy extents and coloured BS5837:2012 tree quality category as shown below.
- BS 5837:2012 Tree Quality Categories - Table 1
 - Category A - High quality
 - Category B - Moderate quality
 - Category C - Low quality
 - Category U - Unsuitable for retention
- Direction of first significant branch
- Root protection area (RPA) Calculated in accordance with Section 4.6 - BS5837:2012
- Tree protected by Conwy Council or Denbighshire Tree Preservation Order (TPO). Bracketted number reference relates to the TPO Schedule.
- Veteran tree buffer (15 x stem Ø) (as per standing advice produced by Natural Resource Wales)
- Designated Ancient Woodland and buffer (15m offset, as per Natural Resource Wales ancient woodland inventory, via open data publication)

NOTES:

- Refer to RPS Tree Survey & Arboricultural Impact Assessment Report for further details.
- Survey based on a visual inspection from the ground and is not intended as a full arboricultural inspection.
- Plans produced in accordance with recommendations set out in BS 5837:2012 - 'Trees in Relation to design, demolition and construction'.
- Due to the legal protection afforded to breeding birds vegetation removal should not take place during the bird nesting period; generally, although not restricted to, March - August inclusive.
- Survey based upon aerial photography, therefore tree locations should be deemed as approximate, and not digitally accurate.



Drawing Number:
731

Project Name:
MONA OFFSHORE WIND PROJECT

Drawing Title:
TREE SURVEY PLAN

Scale
Scale@A0: 1:500

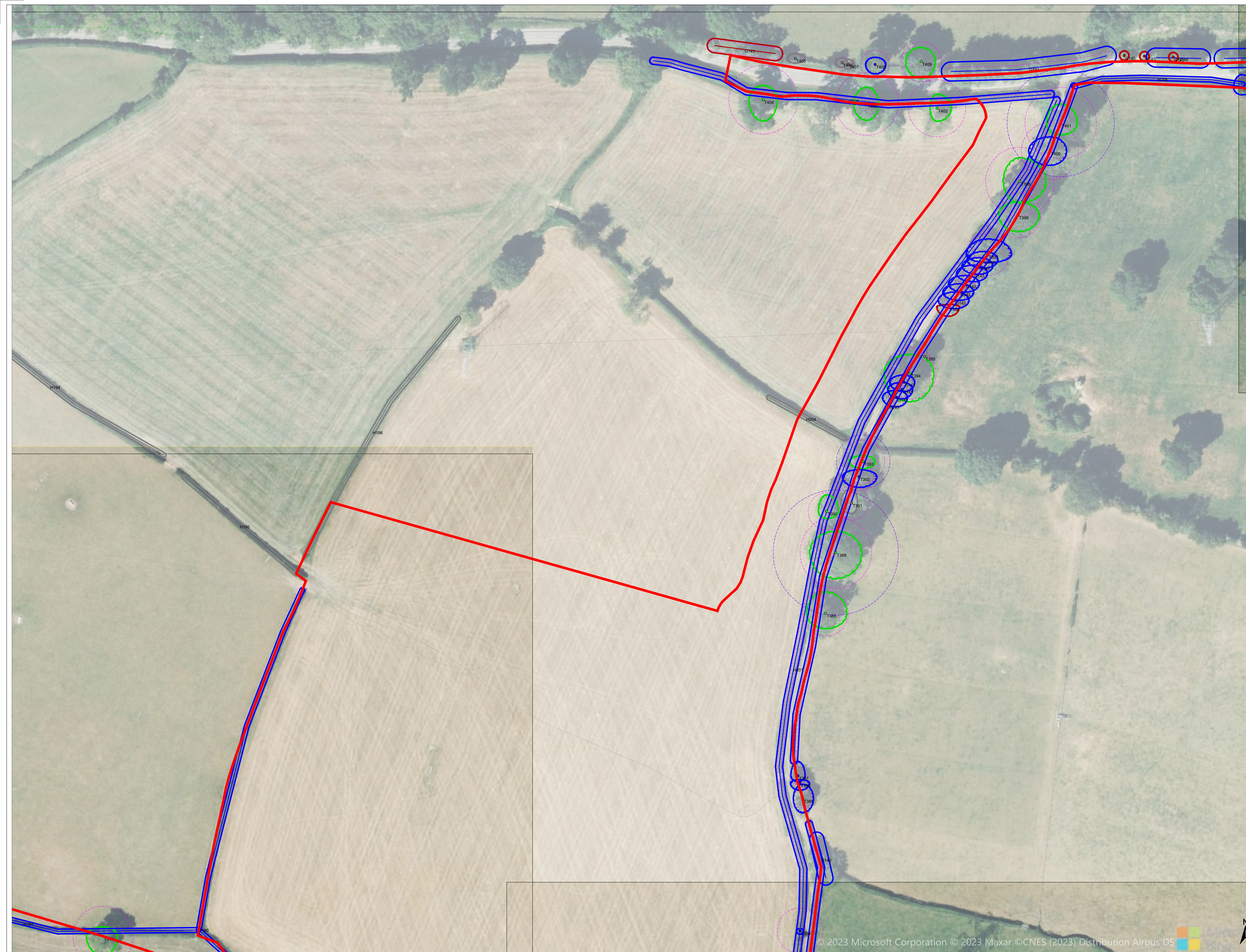
Geodetic Information:
Datum: ETRS 1989
Projection: British National Grid

Data Sources: Client

Service Layer Credits: Esri, HERE, Garmin, Intermap, increment P Corp., GEBCO, USGS, FAO, NPS, NRCAN, GeoBase, IGN, Kadaster NL, Ordnance Survey, Esri Japan, METI, Esri China (Hong Kong), (c) OpenStreetMap contributors, and the GIS User Community

VER	DATE	DETAILS	BY	CHECK
03	Sept/24	Comment	RC	DC

\\s01-rs-01\projects\3300\Serial\JL3999 - Morgan and Mona OWP\Arboriculture\Tech\ACAD\Current\JL3999_701743D TCF Cable Route.dwg
Visual-Is-01\projects\3300\Serial\JL3999 - Morgan and Mona OWP\Arboriculture\Tech\ACAD\Current\JL3999_701743D TCF Cable Route.dwg

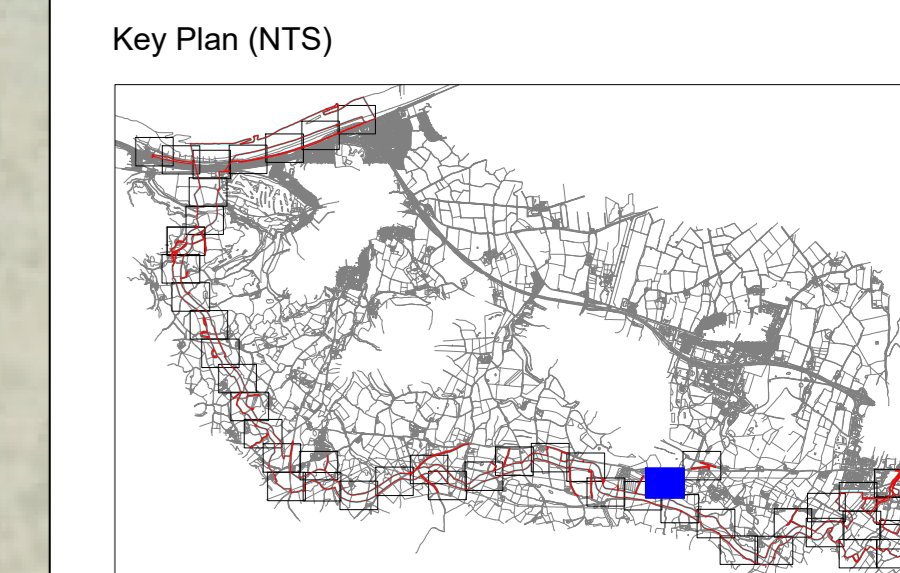


LEGEND

- Mona Offshore Development Area (MO_PRJ_BP_0162_DCO_Rev11)
- Tree with numbered reference. Canopy spread and coloured BS5837:2012 tree quality category as shown below. # = Tree details estimate (inaccessible tree) = Tree in off site location
- Vegetation group with numbered reference. Canopy extents and coloured BS5837:2012 tree quality category as shown below.
- Hedge with numbered reference. Canopy extents and coloured BS5837:2012 tree quality category as shown below.
- Woodland with numbered reference. Canopy extents and coloured BS5837:2012 tree quality category as shown below.
- BS 5837:2012 Tree Quality Categories - Table 1
 - Category A - High quality
 - Category B - Moderate quality
 - Category C - Low quality
 - Category U - Unsuitable for retention
- Direction of first significant branch
- Root protection area (RPA) Calculated in accordance with Section 4.6 - BS5837:2012
- Tree protected by Conwy Council or Denbighshire Tree Preservation Order (TPO). Bracketted number reference relates to the TPO Schedule.
- Veteran tree buffer (15 x stem Ø) (as per standing advice produced by Natural Resource Wales)
- Designated Ancient Woodland and buffer (15m offset, as per Natural Resource Wales ancient woodland inventory, via open data publication)

NOTES:

- Refer to RPS Tree Survey & Arboricultural Impact Assessment Report for further details.
- Survey based on a visual inspection from the ground and is not intended as a full arboricultural inspection.
- Plans produced in accordance with recommendations set out in BS 5837:2012 - 'Trees in Relation to design, demolition and construction'.
- Due to the legal protection afforded to breeding birds vegetation removal should not take place during the bird nesting period, generally, although not restricted to, March - August inclusive.
- Survey based on aerial photography, therefore tree locations should be deemed as approximate, and not digitally accurate.



Drawing Number:
732

Project Name:
MONA OFFSHORE WIND PROJECT

Drawing Title:
TREE SURVEY PLAN

Scale
Scale@A0: 1:500

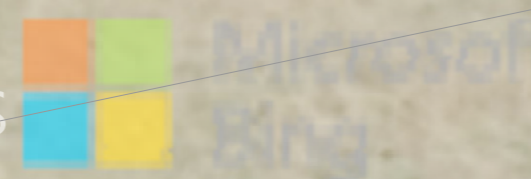
Geodetic Information:
Datum: ETRS 1989
Projection: British National Grid

Data Sources: Client

Service Layer Credits: Esri, HERE, Garmin, Intermap, increment P Corp., GEBCO, USGS, FAO, NPS, NRCAN, GeoBase, IGN, Kadaster NL, Ordnance Survey, Esri Japan, METI, Esri China (Hong Kong), (c) OpenStreetMap contributors, and the GIS User Community

VER	DATE	DETAILS	BY	CHECK
03	Sept/24	Comment	RC	DC

\\s01-rs-01\projects\3900\Series\JL3999 - Morgan and Mona Offshore\Arboriculture\Tech\ACAD\Current\JL3999_7017430_TCP_Cable_Route.dwg
Visu@rs-01\projects\3900\Series\JL3999 - Morgan and Mona Offshore\Arboriculture\Tech\ACAD\Current\JL3999_7017430_TCP_Cable_Route.dwg

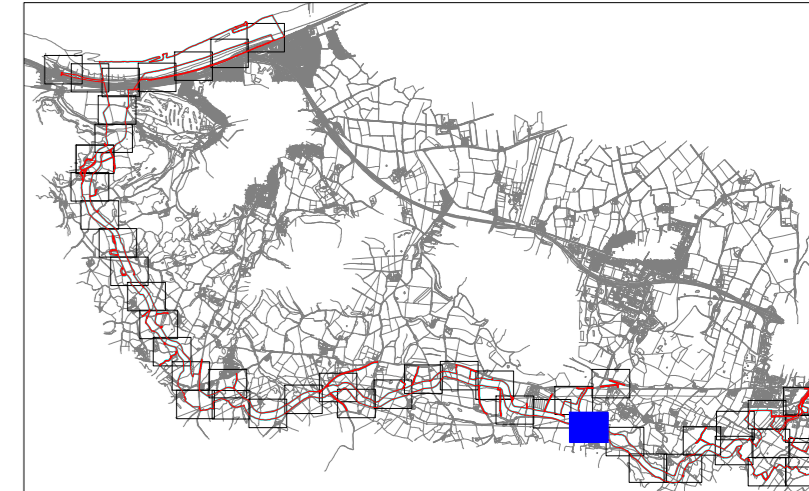


LEGEND

- Mona Offshore Development Area (MO_PRJ_BP_0162_DCO_Rev11)
- Tree with numbered reference. Canopy spread and coloured BSS5837:2012 tree quality category as shown below. # = Tree details estimate (inaccessible tree) * = Tree in off site location
- Vegetation group with numbered reference. Canopy extents and coloured BSS5837:2012 tree quality category as shown below.
- Hedge with numbered reference. Canopy extents and coloured BSS5837:2012 tree quality category as shown below.
- Woodland with numbered reference. Canopy extents and coloured BSS5837:2012 tree quality category as shown below.
- BS 5837:2012 Tree Quality Categories - Table 1
 - Category A - High quality
 - Category B - Moderate quality
 - Category C - Low quality
 - Category U - Unsuitable for retention
- Direction of first significant branch
- Root protection area (RPA) Calculated in accordance with Section 4.6 - BS5837:2012
- Tree protected by Conwy Council or Denbighshire Tree Preservation Order (TPO). Bracketted number reference relates to the TPO Schedule.
- Veteran tree buffer (15 x stem Ø) (as per standing advice produced by Natural Resource Wales)
- Designated Ancient Woodland and buffer (15m offset, as per Natural Resource Wales ancient woodland inventory, via open data publication)

- NOTES:**
- Refer to RPS Tree Survey & Arboricultural Impact Assessment Report for further details.
 - Survey based on a visual inspection from the ground and is not intended as a full arboricultural inspection.
 - Plans produced in accordance with recommendations set out in BS 5837:2012 - 'Trees in Relation to design, demolition and construction'.
 - Due to the legal protection afforded to breeding birds vegetation removal should not take place during the bird nesting period; generally, although not restricted to, March - August inclusive.
 - Survey based upon aerial photography, therefore tree locations should be deemed as approximate, and not digitally accurate.

Key Plan (NTS)



Drawing Number:
733

VER	DATE	DETAILS	BY	CHECK
03	Sept/24	Comment	RC	DC

Project Name:
MONA OFFSHORE WIND PROJECT

Drawing Title:
TREE SURVEY PLAN

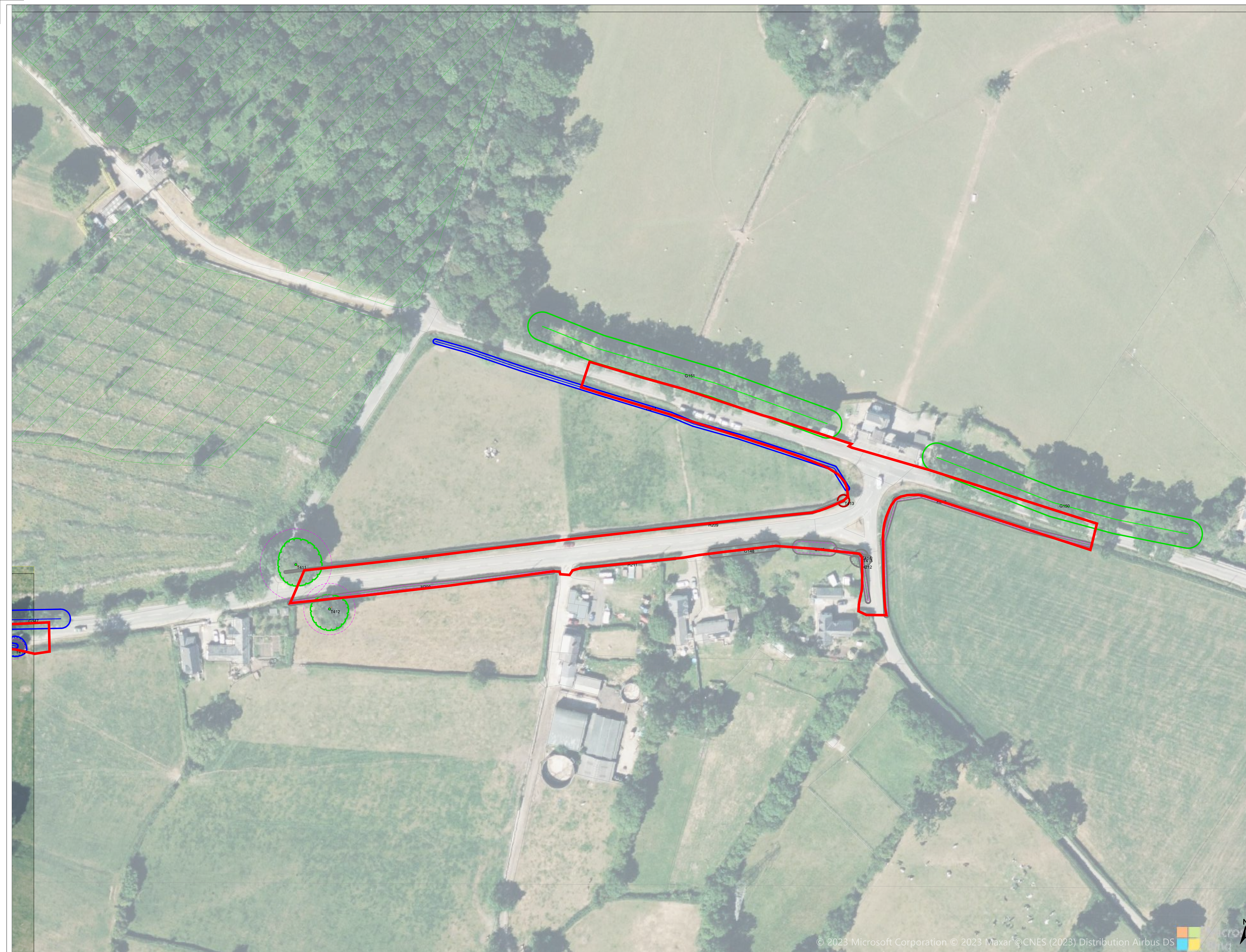
Scale
Scale@A0: 1:500

Geodetic Information:
Datum: ETRS 1989
Projection: British National Grid








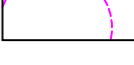

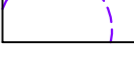

Data Sources: Client

Service Layer Credits: Esri, HERE, Garmin, Intermap, increment P Corp., GEBCO, USGS, FAO, NPS, NRCAN, GeoBase, IGN, Kadaster NL, Ordnance Survey, Esri Japan, METI, Esri China (Hong Kong), (c) OpenStreetMap contributors, and the GIS User Community

\\nas01-01\projects\3900\Series\JL3999 - Morgan and Mona Offshore\Arboriculture\Tech\ACAD\Current\JL3999_7017430_TCP_Cable_Route.dwg
V:\04-15-21\projects\3900\Series\JL3999 - Morgan and Mona Offshore\Arboriculture\Tech\ACAD\Current\JL3999_7017430_TCP_Cable_Route.dwg

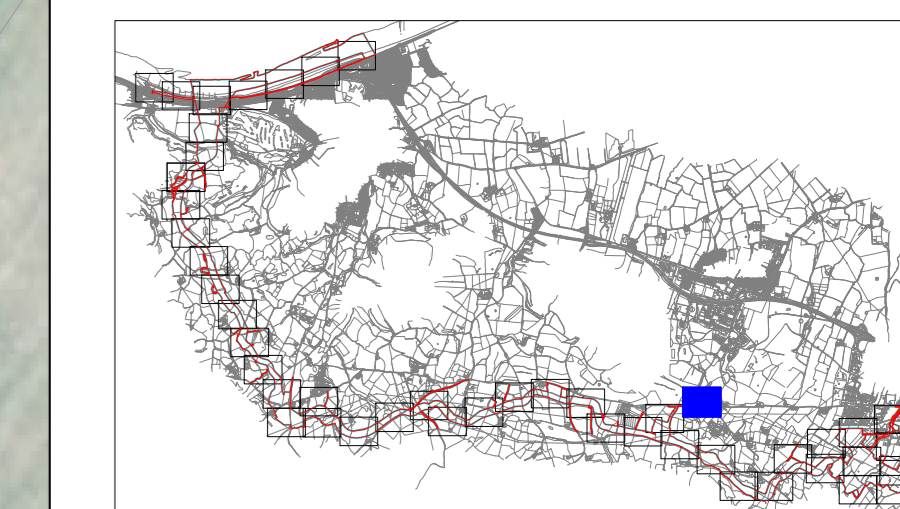


LEGEND

-  Mona Offshore Development Area (MO_PRJ_BP_0162_DCO_Rev11)
-  Tree with numbered reference. Canopy spread and coloured BS5837:2012 tree quality category as shown below. # = Tree details estimate (inaccessible tree) * = Tree in off site location
-  Vegetation group with numbered reference. Canopy extents and coloured BS5837:2012 tree quality category as shown below.
-  Hedge with numbered reference. Canopy extents and coloured BS5837:2012 tree quality category as shown below.
-  Woodland with numbered reference. Canopy extents and coloured BS5837:2012 tree quality category as shown below.
-  Tree Quality Categories - Table 1
BS 5837:2012
● Category A - High quality
● Category B - Moderate quality
● Category C - Low quality
● Category U - Unsuitable for retention
-  Direction of first significant branch
-  Root protection area (RPA) Calculated in accordance with Section 4.6 - BS5837:2012
-  Tree protected by Conwy Council or Denbighshire Tree Preservation Order (TPO). Bracketted number reference relates to the TPO Schedule.
-  Veteran tree buffer (15 x stem Ø) (as per standing advice produced by Natural Resource Wales)
-  Designated Ancient Woodland and buffer (15m offset, as per Natural Resource Wales ancient woodland inventory, via open data publication)

- NOTES:**
- Refer to RPS Tree Survey & Arboricultural Impact Assessment Report for further details.
 - Survey based on a visual inspection from the ground and is not intended as a full arboricultural inspection.
 - Plans produced in accordance with recommendations set out in BS 5837:2012 - 'Trees in Relation to design, demolition and construction'.
 - Due to the legal protection afforded to breeding birds vegetation removal should not take place during the bird nesting period; generally, although not restricted to, March - August inclusive.
 - Survey based upon aerial photography, therefore tree locations should be deemed as approximate, and not digitally accurate.

Key Plan (NTS)

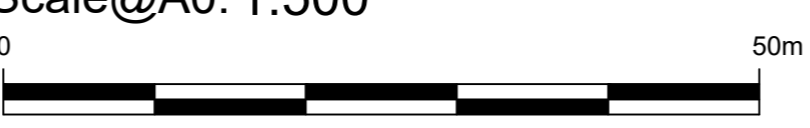


Drawing Number: 734

VER	DATE	DETAILS	BY	CHECK
03	Sept/24	Comment	RC	DC

Project Name:
MONA OFFSHORE WIND PROJECT

Drawing Title:
TREE SURVEY PLAN

Scale
Scale@A0: 1:500


Geodetic Information:
Datum: ETRS 1989
Projection: British National Grid

Data Sources: Client

Service Layer Credits: Esri, HERE, Garmin, Intermap, increment P Corp., GEBCO, USGS, FAO, NPS, NRCAN, GeoBase, IGN, Kadaster NL, Ordnance Survey, Esri Japan, METI, Esri China (Hong Kong), (c) OpenStreetMap contributors, and the GIS User Community

\\s01-rs-01\projects\3900\Series\JL3999 - Morgan and Mona Offshore\Arboriculture\Tech\ACAD\Current\JL3999_7017430_TCP_Cable_Route.dwg
Visu@rs-01\projects\3900\Series\JL3999 - Morgan and Mona Offshore\Arboriculture\Tech\ACAD\Current\JL3999_7017430_TCP_Cable_Route.dwg

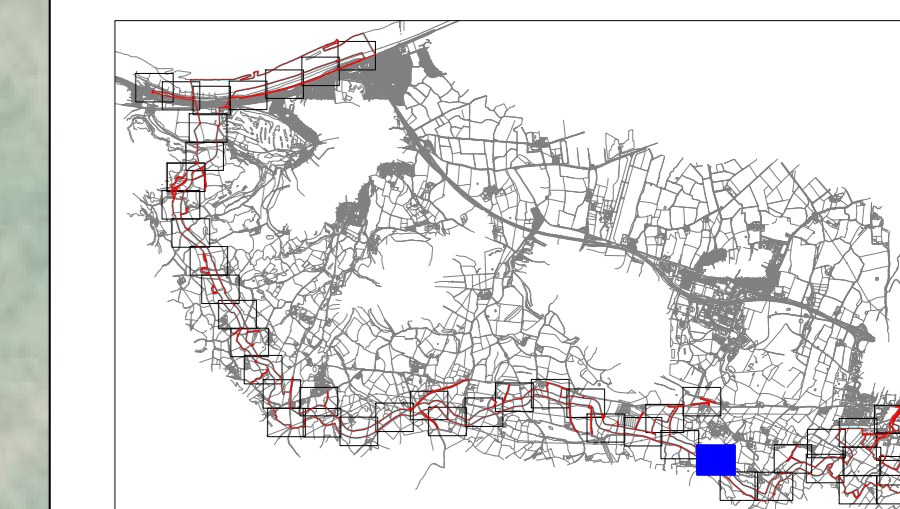


LEGEND

- Mona Offshore Development Area (MO_PRJ_BP_0162_DCO_Rev11)
- Tree with numbered reference. Canopy spread and coloured BS5837:2012 tree quality category as shown below. # = Tree details estimate (inaccessible tree) * = Tree in off site location
- Vegetation group with numbered reference. Canopy extents and coloured BS5837:2012 tree quality category as shown below.
- Hedge with numbered reference. Canopy extents and coloured BS5837:2012 tree quality category as shown below.
- Woodland with numbered reference. Canopy extents and coloured BS5837:2012 tree quality category as shown below.
- BS 5837:2012 Tree Quality Categories - Table 1
 - Category A - High quality
 - Category B - Moderate quality
 - Category C - Low quality
 - Category U - Unsuitable for retention
- Direction of first significant branch
- Root protection area (RPA) Calculated in accordance with Section 4.6 - BS5837:2012
- Tree protected by Conwy Council or Denbighshire Tree Preservation Order (TPO). Bracketted number reference relates to the TPO Schedule.
- Veteran tree buffer (15 x stem Ø) (as per standing advice produced by Natural Resource Wales)
- Designated Ancient Woodland and buffer (15m offset, as per Natural Resource Wales ancient woodland inventory, via open data publication)

- NOTES:**
- Refer to RPS Tree Survey & Arboricultural Impact Assessment Report for further details.
 - Survey based on a visual inspection from the ground and is not intended as a full arboricultural inspection.
 - Plans produced in accordance with recommendations set out in BS 5837:2012 - 'Trees in Relation to design, demolition and construction'.
 - Due to the legal protection afforded to breeding birds vegetation removal should not take place during the bird nesting period; generally, although not restricted to, March - August inclusive.
 - Survey based upon aerial photography, therefore tree locations should be deemed as approximate, and not digitally accurate.

Key Plan (NTS)



Drawing Number:
735

Project Name:
MONA OFFSHORE WIND PROJECT

Drawing Title:
TREE SURVEY PLAN

Scale
Scale@A0: 1:500

Geodetic Information:
Datum: ETRS 1989
Projection: British National Grid

Data Sources: Client

Service Layer Credits: Esri, HERE, Garmin, Intermap, increment P Corp., GEBCO, USGS, FAO, NPS, NRCAN, GeoBase, IGN, Kadaster NL, Ordnance Survey, Esri Japan, METI, Esri China (Hong Kong), (c) OpenStreetMap contributors, and the GIS User Community

VER	DATE	DETAILS	BY	CHECK
03	Sept/24	Comment	RC	DC

\\s01-rs-01\projects\3900\Series\JL3999 - Morgan and Mona Offshore Wind\Arboriculture\Tech\ACAD\Current\JL3999_7017430_TCP_Cable_Route.dwg
Visu@-rs-01\projects\3900\Series\JL3999 - Morgan and Mona Offshore Wind\Arboriculture\Tech\ACAD\Current\JL3999_7017430_TCP_Cable_Route.dwg

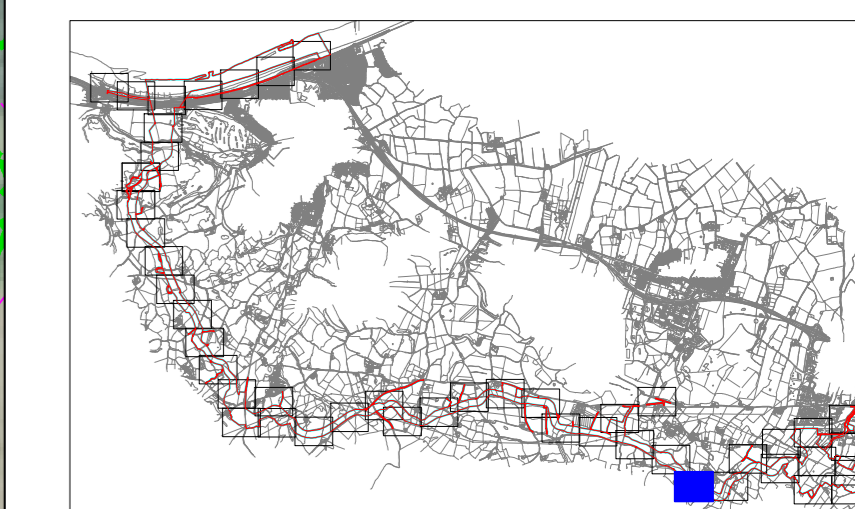


LEGEND

- Mona Offshore Development Area (MO_PRJ_BP_0162_DCO_Rev11)
- Tree with numbered reference. Canopy spread and coloured BS5837:2012 tree quality category as shown below. # = Tree details estimate (inaccessible tree) = Tree in off site location
- Vegetation group with numbered reference. Canopy extents and coloured BS5837:2012 tree quality category as shown below.
- Hedge with numbered reference. Canopy extents and coloured BS5837:2012 tree quality category as shown below.
- Woodland with numbered reference. Canopy extents and coloured BS5837:2012 tree quality category as shown below.
- Trees Quality Categories - Table 1
 • Category A - High quality
 • Category B - Moderate quality
 • Category C - Low quality
 • Category U - Unsuitable for retention
- Direction of first significant branch
- Root protection area (RPA) Calculated in accordance with Section 4.6 - BS5837:2012
- Tree protected by Conwy Council or Denbighshire Tree Preservation Order (TPO). Bracketted number reference relates to the TPO Schedule.
- Veteran tree buffer (15 x stem Ø) (as per standing advice produced by Natural Resource Wales)
- Designated Ancient Woodland and buffer (15m offset, as per Natural Resource Wales ancient woodland inventory, via open data publication)

- NOTES:**
- Refer to RPS Tree Survey & Arboricultural Impact Assessment Report for further details.
 - Survey based on a visual inspection from the ground and is not intended as a full arboricultural inspection.
 - Plan produced in accordance with recommendations set out in BS 5837:2012 - 'Trees in Relation to design, demolition and construction'.
 - Due to the legal protection afforded to breeding birds vegetation removal should not take place during the bird nesting period; generally, although not restricted to, March - August inclusive.
 - Survey based upon aerial photography, therefore tree locations should be deemed as approximate, and not digitally accurate.

Key Plan (NTS)



Drawing Number:
736

Project Name:
MONA OFFSHORE WIND PROJECT

Drawing Title:
TREE SURVEY PLAN

Scale
Scale@A0: 1:500

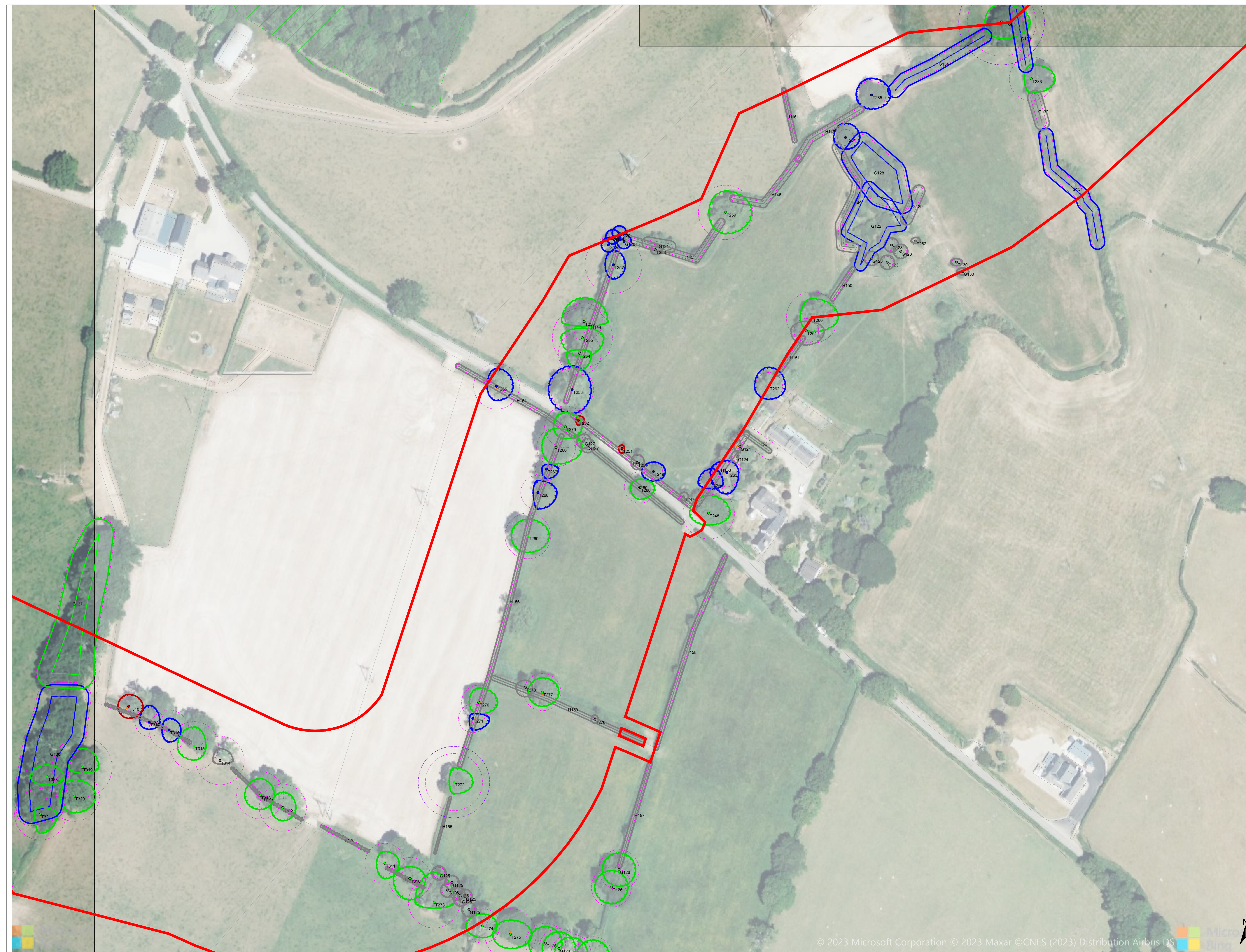
Geodetic Information:
Datum: ETRS 1989
Projection: British National Grid

Data Sources: Client

Service Layer Credits: Esri, HERE, Garmin, Intermap, increment P Corp., GEBCO, USGS, FAO, NPS, NRCAN, GeoBase, IGN, Kadaster NL, Ordnance Survey, Esri Japan, METI, Esri China (Hong Kong), (c) OpenStreetMap contributors, and the GIS User Community

VER	DATE	DETAILS	BY	CHECK
03	Sept/24	Comment	RC	DC

\\s01-rs-01\projects\3900\Series\JL3999 - Morgan and Mona Offshore\Arboriculture\Tech\ACAD\Current\JL3999_7017430_TCP_Cable_Route.dwg
 Visu@rs-01\projects\3900\Series\JL3999 - Morgan and Mona Offshore\Arboriculture\Tech\ACAD\Current\JL3999_7017430_TCP_Cable_Route.dwg

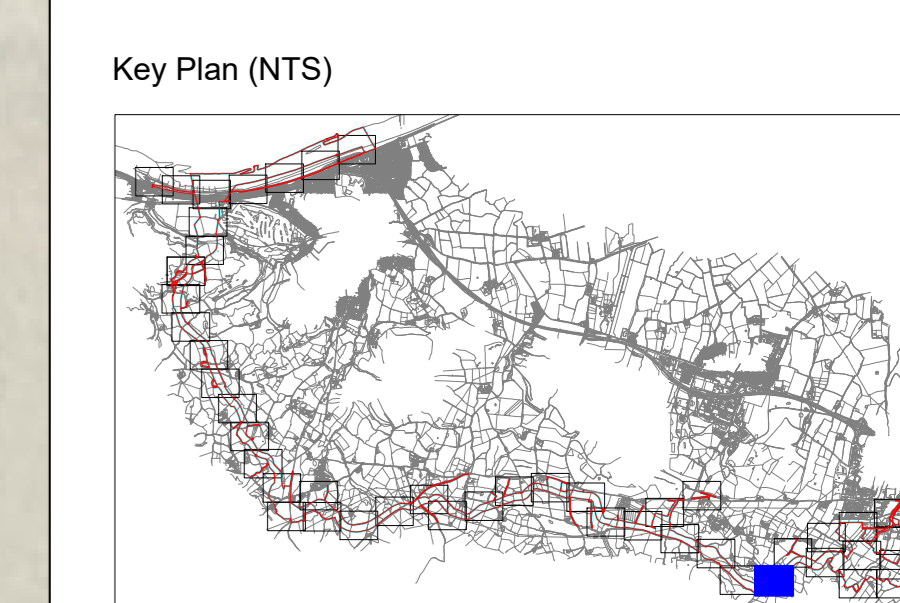


LEGEND

- Mona Offshore Development Area (MO_PRJ_BP_0162_DCO_Rev11)
- Tree with numbered reference. Canopy spread and coloured BS5837:2012 tree quality category as shown below. # = Tree details estimate (inaccessible tree) = Tree in off site location
- G1 Vegetation group with numbered reference. Canopy extents and coloured BS5837:2012 tree quality category as shown below.
- H1 Hedge with numbered reference. Canopy extents and coloured BS5837:2012 tree quality category as shown below.
- W1 Woodland with numbered reference. Canopy extents and coloured BS5837:2012 tree quality category as shown below.
- BS 5837:2012 Tree Quality Categories - Table 1
 - Category A - High quality
 - Category B - Moderate quality
 - Category C - Low quality
 - Category U - Unsuitable for retention
- Direction of first significant branch
- Root protection area (RPA) Calculated in accordance with Section 4.6 - BS5837:2012
- Tree protected by Conwy Council or Denbighshire Tree Preservation Order (TPO). Bracketted number reference relates to the TPO Schedule.
- Veteran tree buffer (15 x stem Ø) (as per standing advice produced by Natural Resource Wales)
- Designated Ancient Woodland and buffer (15m offset; as per Natural Resource Wales ancient woodland inventory, via open data publication)

NOTES:

- Refer to RPS Tree Survey & Arboricultural Impact Assessment Report for further details.
- Survey based on a visual inspection from the ground and is not intended as a full arboricultural inspection.
- Plans produced in accordance with recommendations set out in BS 5837:2012 - 'Trees in Relation to design, demolition and construction'.
- Due to the legal protection afforded to breeding birds vegetation removal should not take place during the bird nesting period; generally, although not restricted to, March - August inclusive.
- Survey based on aerial photography, therefore tree locations should be deemed as approximate, and not digitally accurate.



Drawing Number:
737

Project Name:
MONA OFFSHORE WIND PROJECT

Drawing Title:
TREE SURVEY PLAN

Scale
Scale@A0: 1:500

Geodetic Information:
Datum: ETRS 1989
Projection: British National Grid

Data Sources: Client

Service Layer Credits: Esri, HERE, Garmin, Intermap, increment P Corp., GEBCO, USGS, FAO, NPS, NRCAN, GeoBase, IGN, Kadaster NL, Ordnance Survey, Esri Japan, METI, Esri China (Hong Kong), (c) OpenStreetMap contributors, and the GIS User Community

VER	DATE	DETAILS	BY	CHECK
03	Sept/24	Comment	RC	DC

\\s01-rs-01\projects\3900\Serial\3999 - Morgan and Mona Offshore\Arboriculture\Tech\ACAD\Current\JL3999_7017430_TCP_Cable_Route.dwg
Visu@rs-01\projects\3900\Serial\3999 - Morgan and Mona Offshore\Arboriculture\Tech\ACAD\Current\JL3999_7017430_TCP_Cable_Route.dwg

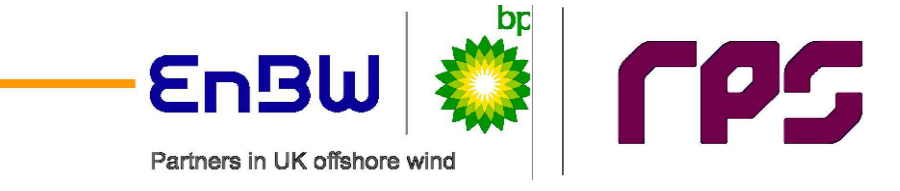
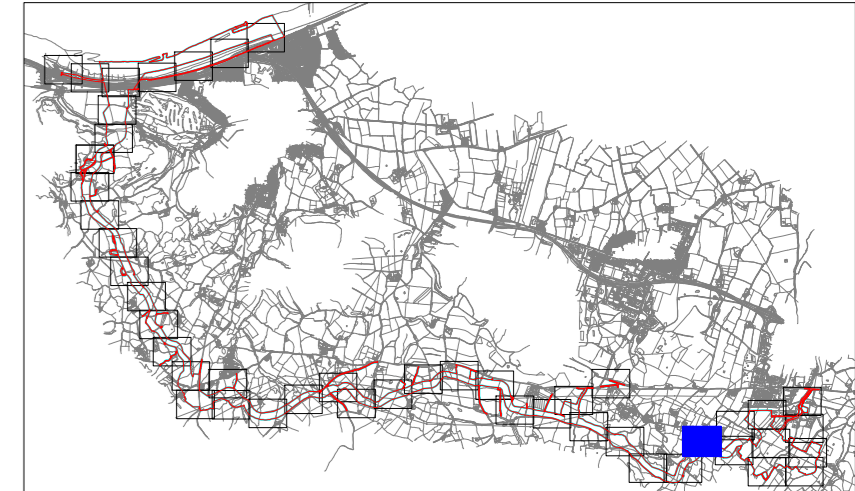


LEGEND

- Mona Offshore Development Area (MO_PRJ_BP_0162_DCO_Rev11)
- Tree with numbered reference. Canopy spread and coloured BS5837:2012 tree quality category as shown below. # = Tree details estimate (inaccessible tree) = Tree in off site location
- Vegetation group with numbered reference. Canopy extents and coloured BS5837:2012 tree quality category as shown below.
- Hedge with numbered reference. Canopy extents and coloured BS5837:2012 tree quality category as shown below.
- Woodland with numbered reference. Canopy extents and coloured BS5837:2012 tree quality category as shown below.
- BS 5837:2012 Tree Quality Categories - Table 1
 - Category A - High quality
 - Category B - Moderate quality
 - Category C - Low quality
 - Category U - Unsuitable for retention
- Direction of first significant branch
- Root protection area (RPA) Calculated in accordance with Section 4.6 - BS5837:2012
- Tree protected by Conwy Council or Denbighshire Tree Preservation Order (TPO). Bracketted number reference relates to the TPO Schedule.
- Veteran tree buffer (15 x stem Ø) (as per standing advice produced by Natural Resource Wales)
- Designated Ancient Woodland and buffer (15m offset, as per Natural Resource Wales ancient woodland inventory, via open data publication)

- NOTES:**
- Refer to RPS Tree Survey & Arboricultural Impact Assessment Report for further details.
 - Survey based on a visual inspection from the ground and is not intended as a full arboricultural inspection.
 - Plan produced in accordance with recommendations set out in BS 5837:2012 - 'Trees in Relation to design, demolition and construction'.
 - Due to the legal protection afforded to breeding birds vegetation removal should not take place during the bird nesting period, generally, although not restricted to, March - August inclusive.
 - Survey based upon aerial photography, therefore tree locations should be deemed as approximate, and not digitally accurate.

Key Plan (NTS)



Drawing Number: **738**

VER	DATE	DETAILS	BY	CHECK
03	Sept/24	Comment	RC	DC

Project Name:
MONA OFFSHORE WIND PROJECT

Drawing Title:
TREE SURVEY PLAN

Scale
Scale@A0: 1:500

Geodetic Information:
Datum: ETRS 1989
Projection: British National Grid

Data Sources: Client

Service Layer Credits: Esri, HERE, Garmin, Intermap, increment P Corp., GEBCO, USGS, FAO, NPS, NRCAN, GeoBase, IGN, Kadaster NL, Ordnance Survey, Esri Japan, METI, Esri China (Hong Kong), (c) OpenStreetMap contributors, and the GIS User Community

\\s01-rs-01\projects\3300\Series\JL3999 - Morgan and Mona Offshore Wind\Technical\Current\JL3999_701743D_TCP_Cable_Route.dwg

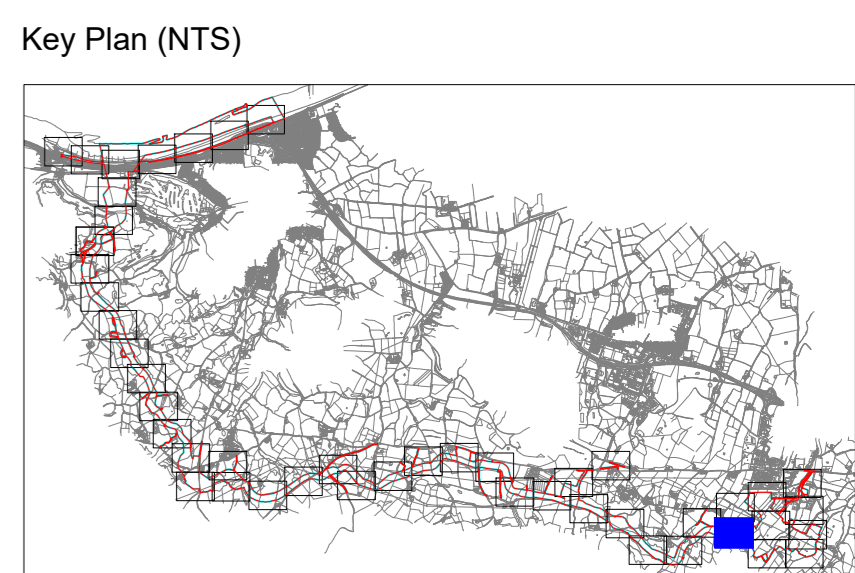


LEGEND

- MONA Offshore Development Area (MO_PRJ_BP_0162_DCO_Rev11)
- Tree with numbered reference. Canopy spread and coloured BS5837:2012 tree quality category as shown below. # = Tree details estimate (inaccessible tree) * = Tree in off site location
- Vegetation group with numbered reference. Canopy extents and coloured BS5837:2012 tree quality category as shown below.
- Hedge with numbered reference. Canopy extents and coloured BS5837:2012 tree quality category as shown below.
- Woodland with numbered reference. Canopy extents and coloured BS5837:2012 tree quality category as shown below.
- BS 5837:2012 Tree Quality Categories - Table 1
 - Category A - High quality
 - Category B - Moderate quality
 - Category C - Low quality
 - Category U - Unsuitable for retention
- Direction of first significant branch
- Root protection area (RPA) Calculated in accordance with Section 4.6 - BS5837:2012
- Tree protected by Conwy Council or Denbighshire Tree Preservation Order (TPO). Bracketted number reference relates to the TPO Schedule.
- Veteran tree buffer (15 x stem Ø) (as per standing advice produced by Natural Resource Wales)
- Designated Ancient Woodland and buffer (15m offset, as per Natural Resource Wales ancient woodland inventory, via open data publication)

NOTES:

- Refer to RPS Tree Survey & Arboricultural Impact Assessment Report for further details.
- Survey based on a visual inspection from the ground and is not intended as a full arboricultural inspection.
- Plan produced in accordance with recommendations set out in BS 5837:2012 - "Trees in Relation to design, demolition and construction".
- Due to the legal protection afforded to breeding birds vegetation removal should not take place during the bird nesting period; generally, although not restricted to, March - August inclusive.
- Survey based upon aerial photography, therefore tree locations should be deemed as approximate, and not digitally accurate.



Drawing Number: 739

Project Name: MONA OFFSHORE WIND PROJECT

Drawing Title: TREE SURVEY PLAN

Scale: Scale@A0: 1:500

Geodetic Information: Datum: ETRS 1989 Projection: British National Grid

Data Sources: Client

Service Layer Credits: Esri, HERE, Garmin, Intermap, increment P Corp., GEBCO, USGS, FAO, NPS, NRCAN, GeoBase, IGN, Kadaster NL, Ordnance Survey, Esri Japan, METI, Esri China (Hong Kong), (c) OpenStreetMap contributors, and the GIS User Community

VER	DATE	DETAILS	BY	CHECK
03	Sept/24	Comment	RC	DC

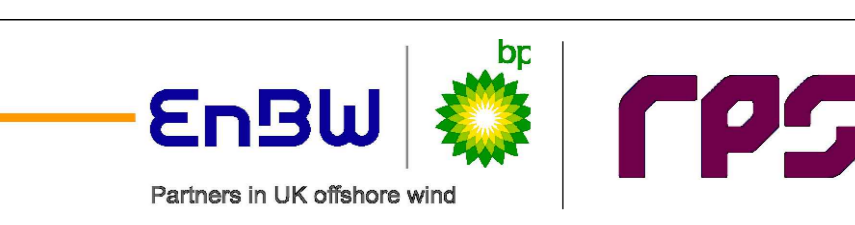
\\nas01\projects\3900\Serial\3900_Morgan and Mona Offshore\Arboriculture\Tech\ACAD\Current\JL3909_701\2450_TCP_Cable_Route.dwg



LEGEND

- Mona Offshore Development Area (MO_PRJ_BP_0162_DCO_Rev11)
- Tree with numbered reference. Canopy spread and coloured BSS5837:2012 tree quality category as shown below. # = Tree details estimate (inaccessible tree) * = Tree in off site location
- Vegetation group with numbered reference. Canopy extents and coloured BSS5837:2012 tree quality category as shown below.
- Hedge with numbered reference. Canopy extents and coloured BSS5837:2012 tree quality category as shown below.
- Woodland with numbered reference. Canopy extents and coloured BSS5837:2012 tree quality category as shown below.
- Tree Quality Categories - Table 1 BS 5837:2012
 - Category A - High quality
 - Category B - Moderate quality
 - Category C - Low quality
 - Category U - Unsuitable for retention
- Direction of first significant branch
- Root protection area (RPA) Calculated in accordance with Section 4.6 - BS5837:2012
- Tree protected by Conwy Council or Denbighshire Tree Preservation Order (TPO). Bracketted number reference relates to the TPO Schedule.
- Veteran tree buffer (15 x stem Ø) (as per standing advice produced by Natural Resource Wales)
- Designated Ancient Woodland and buffer (15m offset, as per Natural Resource Wales ancient woodland inventory, via open data publication)

- NOTES:**
- Refer to RPS Tree Survey & Arboricultural Impact Assessment Report for further details.
 - Survey based on a visual inspection from the ground and is not intended as a full arboricultural inspection.
 - Plan produced in accordance with recommendations set out in BS 5837:2012 - "Trees in Relation to design, demolition and construction".
 - Due to the legal protection afforded to breeding birds vegetation removal should not take place during the bird nesting period, generally, although not restricted to, March - August inclusive.
 - Survey based upon aerial photography, therefore tree locations should be deemed as approximate, and not digitally accurate.



Drawing Number:
740

Project Name:
MONA OFFSHORE WIND PROJECT

Drawing Title:
TREE SURVEY PLAN

Scale
Scale@A0: 1:500

Geodetic Information:
Datum: ETRS 1989
Projection: British National Grid

Data Sources: Client

Service Layer Credits: Esri, HERE, Garmin, Intermap, increment P Corp., GEBCO, USGS, FAO, NPS, NRCAN, GeoBase, IGN, Kadaster NL, Ordnance Survey, Esri Japan, METI, Esri China (Hong Kong), (c) OpenStreetMap contributors, and the GIS User Community

VER	DATE	DETAILS	BY	CHECK
03	Sept/24	Comment	RC	DC

\\s01-rs-01\projects\3000\Series\JL3999 - Morgan and Mona Offshore\Arboriculture\Tech\ACAD\Current\JL3999_7017430_TCP_Cable_Route.dwg
\\s01-rs-01\projects\3000\Series\JL3999 - Morgan and Mona Offshore\Arboriculture\Tech\ACAD\Current\JL3999_7017430_TCP_Cable_Route.dwg

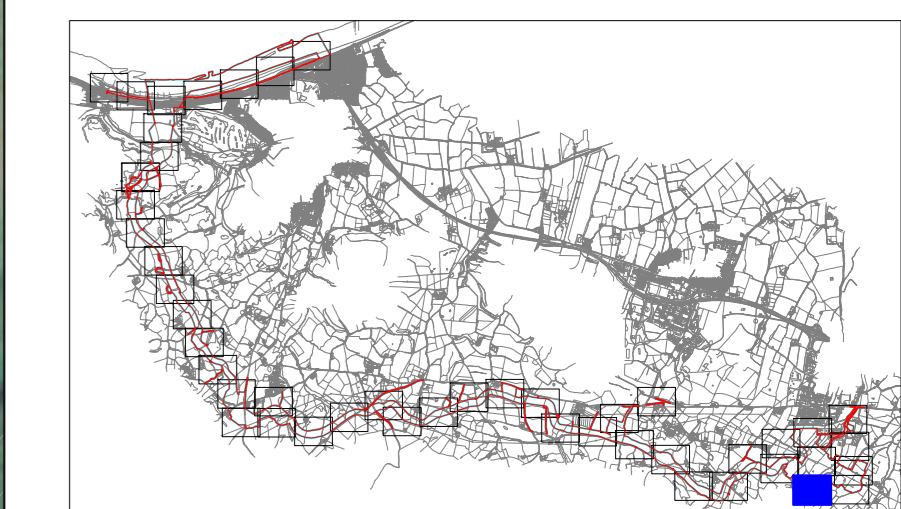


LEGEND

- Mona Offshore Development Area (MO_PRJ_BP_0162_DCO_Rev11)
- Tree with numbered reference. Canopy spread and coloured BS5837:2012 tree quality category as shown below. # = Tree details estimate (inaccessible tree) * = Tree in off site location
- Vegetation group with numbered reference. Canopy extents and coloured BS5837:2012 tree quality category as shown below.
- Hedge with numbered reference. Canopy extents and coloured BS5837:2012 tree quality category as shown below.
- Woodland with numbered reference. Canopy extents and coloured BS5837:2012 tree quality category as shown below.
- Tree Quality Categories - Table 1 BS 5837:2012
 - Category A - High quality
 - Category B - Moderate quality
 - Category C - Low quality
 - Category U - Unsuitable for retention
- Direction of first significant branch
- Root protection area (RPA) Calculated in accordance with Section 4.6 - BS5837:2012
- Tree protected by Conwy Council or Denbighshire Tree Preservation Order (TPO). Bracketted number reference relates to the TPO Schedule.
- Veteran tree buffer (15 x stem Ø) (as per standing advice produced by Natural Resource Wales)
- Designated Ancient Woodland and buffer (15m offset, as per Natural Resource Wales ancient woodland inventory, via open data publication)

NOTES:

- Refer to RPS Tree Survey & Arboricultural Impact Assessment Report for further details.
- Survey based on a visual inspection from the ground and is not intended as a full arboricultural inspection.
- Plans produced in accordance with recommendations set out in BS 5837:2012 - 'Trees in Relation to design, demolition and construction'.
- Due to the legal protection afforded to breeding birds vegetation removal should not take place during the bird nesting period; generally, although not restricted to, March - August inclusive.
- Survey based upon aerial photography, therefore tree locations should be deemed as approximate, and not digitally accurate.



Drawing Number: 741

VER	DATE	DETAILS	BY	CHECK
03	Sept/24	Comment	RC	DC

Project Name:
MONA OFFSHORE WIND PROJECT

Drawing Title:
TREE SURVEY PLAN

Scale
Scale@A0: 1:500

Geodetic Information:
Datum: ETRS 1989
Projection: British National Grid

Data Sources: Client

Service Layer Credits: Esri, HERE, Garmin, Intermap, increment P Corp., GEBCO, USGS, FAO, NPS, NRCAN, GeoBase, IGN, Kadaster NL, Ordnance Survey, Esri Japan, METI, Esri China (Hong Kong), (c) OpenStreetMap contributors, and the GIS User Community

\\nas01-01\projects\3900\Series\JL3999 - Morgan and Mona Offshore\Arboriculture\Tech\ACAD\Current\JL3999_701_741\DCP Cable Route.dwg
 Visu@-15-01\projects\3900\Series\JL3999 - Morgan and Mona Offshore\Arboriculture\Tech\ACAD\Current\JL3999_701_741\DCP Cable Route.dwg